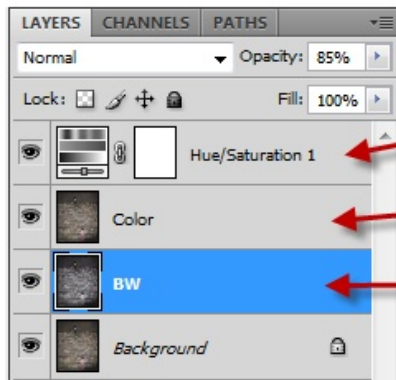


'Lost in the Wood'



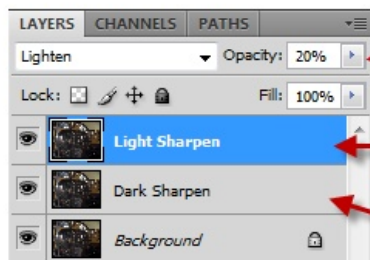
Adjust opacity to suit

Increases the color element

Decreases the color element



Diff Sharpening Action



Adjust the opacity of the layers to suit

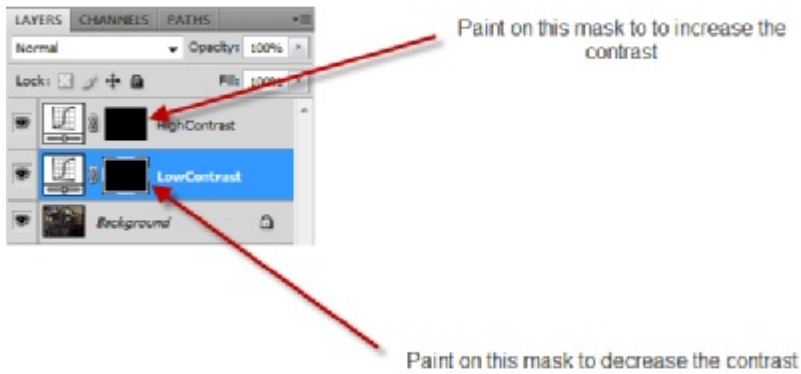
Sharpens the light edges mostly

Sharpens the dark edges mostly

Split Contrast Actions

This action allows you to paint on an increase or decrease in contrast.

Use a white brush on the layer masks to apply the contrast changes.



Vary the opacity of your brush for more control

Detailed BW action

Creates a highly detailed BW or Color image.

