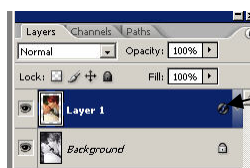


# 1-Click Actions Volume 9

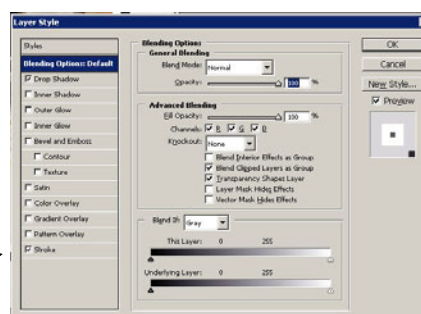
## The actions:

### Pic-in-Pic

Creates a color print overlay over a black and white background.  
Run the action on a coloured image and the action will stop to ask you to draw a rectangle over the area you want to remain in color.



Click here to change the settings for the white border and drop shadow.



Click on the word "Stroke" to open up the stroke dialog you can change the width of the white border or even change the color.

### ColorPunch



The ColorPunch action intensifies colors giving the image more immediate impact.

This action should prove useful in landscape and outdoor portraiture.

The action is adjustable by changing the opacity of the top layer in the usual 1clickactions style and the background layer is left untouched.

---

### HighLight Punch

Similar to ColorPunch but more subtle as it targets the highlights. There is less chance of blocking up the shadows with this action.

Again the strength can be adjusted.



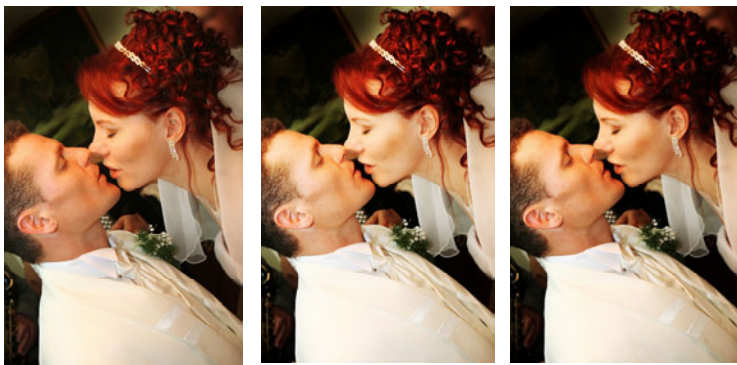
---

### CatWalk Light CatWalk Dark CatWalk Warm Mono

These 3 actions quick the image a contrast boost whilst applying a slight skin softening.

The CatWalk Warm Mono applies the same effect as CatWalk Light but converts to a warm BW making it suitable for a general purpose BW conversion action for portraits.

The differences between the Light and Dark versions are quite subtle.



---

### OldTimer

As its name suggests this action creates an old fashioned look to images with a grainy, high contrast and brown tone—the image remains sharp however.

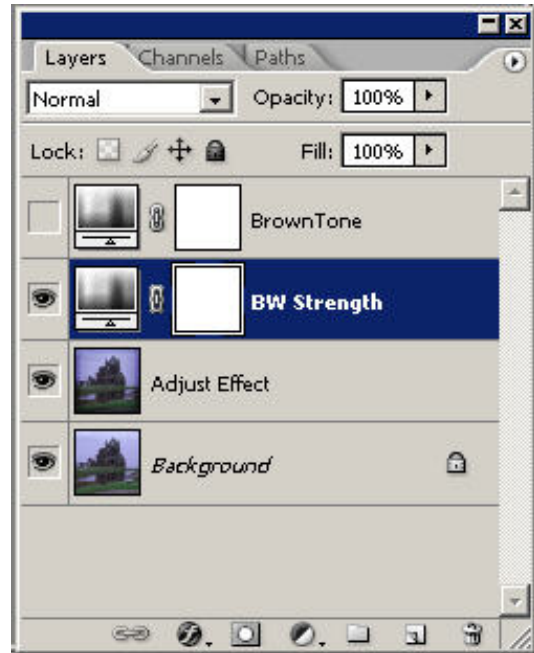
The look is often complimented by the use of one of the 1click vignette or edge actions.



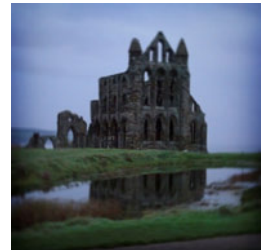
## BoxBrownie

This action lets your multi-thousand dollar camera imitate a junk store camera.

The action creates multiple layers so you can create a color, BW or sepia image by running the action once and turning off the layers as required.



The slight edge darkening is automatically applied by the action. Only the centre of the image remains (fairly) sharp.



**Biscuit Tin**— This action aims to simulate the look of a pinhole camera (without the enormous depth of field). You can consider this as an even poorer quality camera than the BoxBrownie. Traditionally pinholes could be made from shoe boxes or biscuit tins.



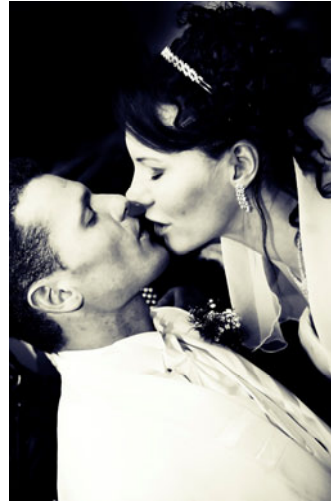
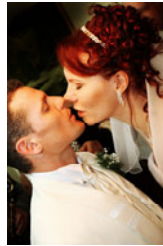
The edges show considerable darkening and distortion with the centre remaining a little sharper.



### Acid Drop

Creates a cross-processed effect on color images and also an effective Yellow/Blue split tone if run on a BW image.

The strength of the effect can be adjusted in either case.



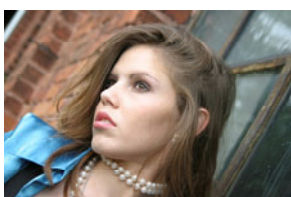
---

### Dramatica Warm & Cold

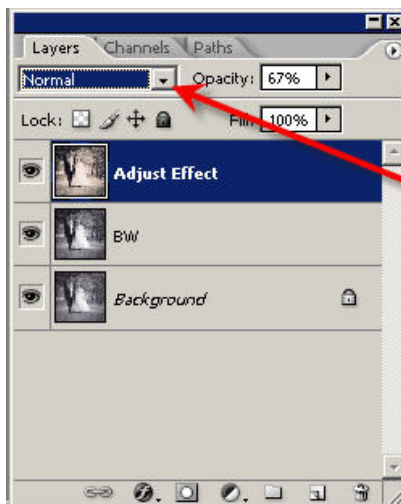
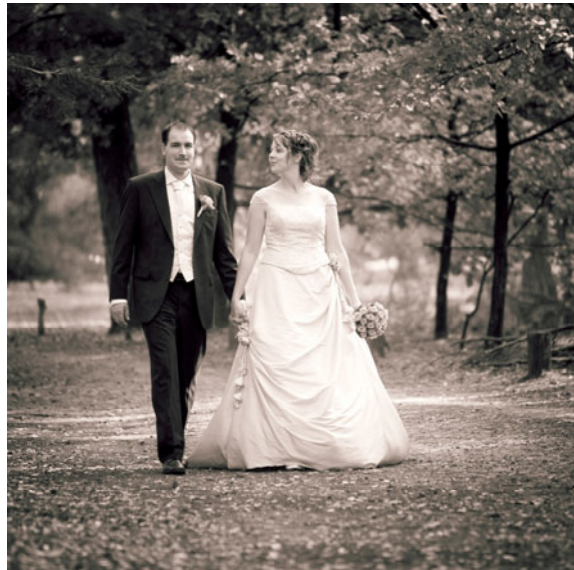
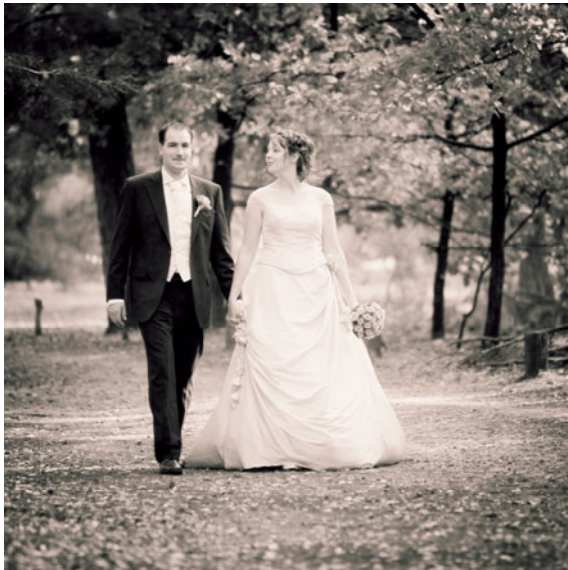
Could be considered as a more intense version of the CatWalk actions but this action gives a more dramatic and sharper result. Again you can adjust the strength as required. Often the lower strengths will work better depend-



**GrittyGrunge** Not the most flattering action for portraiture but is effective on urban or fashion type shots. The option to vary the amount of grain is provided as well as the ability to adjust the strength of the effect overall.



**The Tone With No Name**—This action creates a BW conversion with a peach/brown tone depending on the blending mode. The default mode of normal gives a peach tone but good results can also be obtained with “color” mode.



Try changing the blending mode to “Color” for a brown tone.  
Alter the opacity to suit.

**Louis**—There was a good reason why this action was called Louis but I’ve totally forgotten what it was. Anyhow it creates a soft, faded, grainy peach toned image that works well with the right subject.





**The new Soft Glow actions: Dream Glow, Pastel Glow, NewSoft, YAG, MilkShake, Angel Glow.**

These offer a range of styles that are ideal for weddings and portraiture. Many of the effects are more subtle than the PopGlow range of actions included with Volume 1 of 1clickactions.



DreamGlow



Original



Pastel Glow



NewSoft



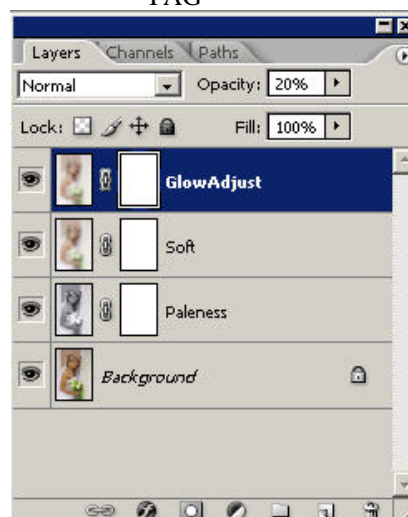
YAG



MilkShake



Angel Glow



As usual these action offer the ability to adjust the strength.

This is the layer palette after running the Pastel Glow action. The HighKey effect, softness and the paleness of the image can all be modified. The effect can be applied locally by painting on the layer masks.

## The Smooth IR actions.

A group of 5 actions that create a slight infrared tonality without the grain and contrast. The range comprises **Smooth IR** (standard BW), **Smooth IR Tint** (BW with a little color added back), **Sepia IR** (a brown toned version), **Blue IR** (a deep blue tone) and **Copper IR** (a reddish brown)



---

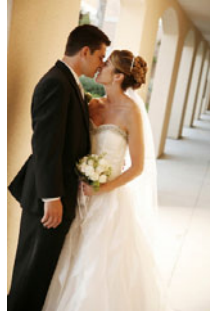
**Color Vitality** — a very simple action that is very useful with close up portraits as it can improve skin tones. The colors will look slightly less vivid so it could prove a good starting point before using any of the other portrait actions.

---



### Warm Fade

Creates a slightly faded warm version of the original.  
Intensity is adjustable.



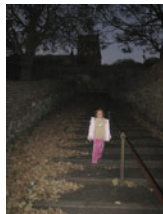
---

**NEW IR**—an alternative version of our BW infrared simulation action. The action allows adjustment of the tone, contrast, grain etc although good results are usually achieved with the default settings.



---

**Spooky**—a fun action that creates a grainy infrared(ish) effect—try it on portraits for really scary eyes!





Action	Photoshop CS3	Photoshop CS2	Photoshop CS	Photoshop 7	16-bit
Sepia IR	√	√	√	√	X
Smooth IR	√	√	√	*	√
Smooth IR tint	√	√	√	*	√
Blue IR	√	√	√	*	X
Copper IR	√	√	√	*	X
AngelGlow	√	√	√	√	√
MilkShake	√	√	√	√	√
YAG	√	√	√	X	X
NewSoft	√	√	√	?	√
PastelGlow	√	√	√	?	X
DreamGlow	√	√	√	?	√
HL Punch	√	√	√	√	√
ColorPunch	√	√	√	√	√
Pic-in-Pic	√	√	√	√	√
Color Vitality	√	√	√	√	√
WarmFade	√	√	X	X	√
Louis	√	√	√	*	√
Tone with no name	√	√	√	√	√
Spooky	√	√	√	√	X
GrittyGrunge	√	√	√	√	√
Dramatica Cold	√	√	√	√	√
DramticaWarm	√	√	√	√	√
AcidDrop	√	√	√	√	√
Biscuit Tin	√	√	√	√	√
Old Timer	√	√	√	√	√
CatWalk Light	√	√	√	?	√
CatWalkDark	√	√	√	?	√
CatWalkMono	√	√	√	?	√
Box Brownie	√	√	√	√	√
New IR	√	√	√	√	X

Key: √ = Compatible  
X = Not Compatible  
\* = Action works but result may be not quite the same as CS and CS2 version  
? = Action requires further testing

**Extra actions include with CS2 and CS3 versions.**

The Sepia IR, Blue IR and Copper IR actions create fairly dark results that might not be suitable for portraits so 3 extra actions are included for CS2 and CS3 namely the SepiaIR Light, BlueIR Light and Copper IR Light. These actions use the same tonality as the existing versions but with a different DuoTone mix to create a lighter version more suited to the “romantic” type of portrait.

