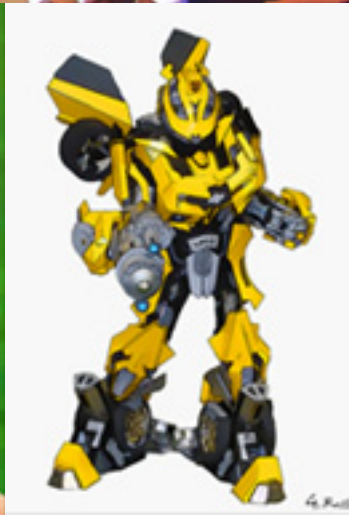




TOPAZ SIMPLIFY V3 QUICK START GUIDE



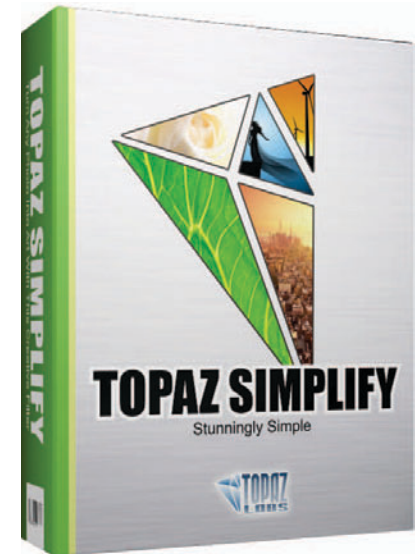
Topaz Simplify allows you to instantly turn your digital images into artist masterpieces with very little effort.

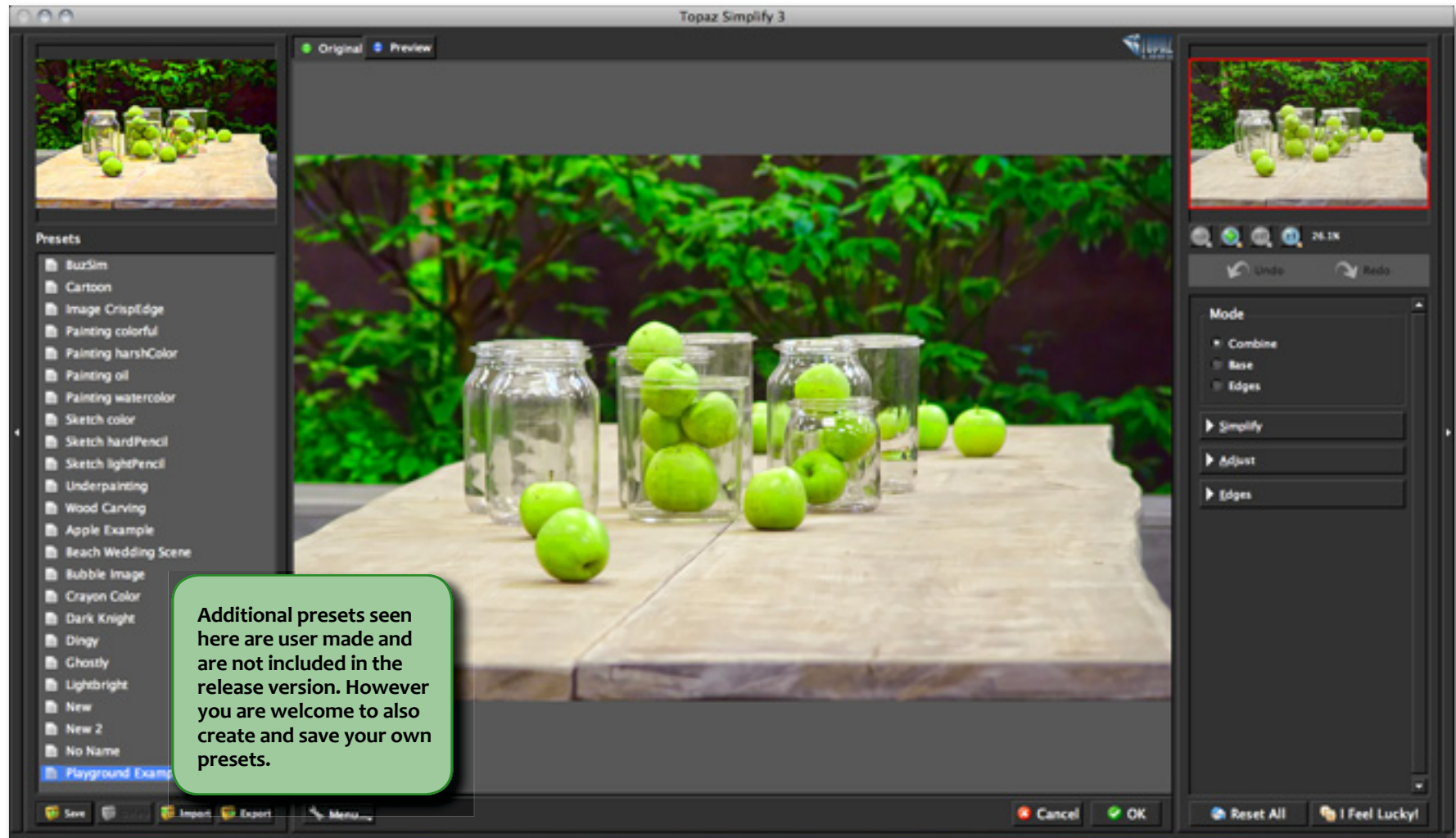
If you are new to the Topaz Simplify program you will notice that it the easiest way to transform your images into art such as paintings, sketches and wood carvings.

Topaz Simplify 3 features the same advanced image enhancement technology from version 2, but the user interface and workflow have been completely revamped. Topaz Simplify 3 features a new user interface, a new presets layout, Undo / Redo controls and larger image capabilities.

Here are some other fun and very useful features introduced in Simplify V3:

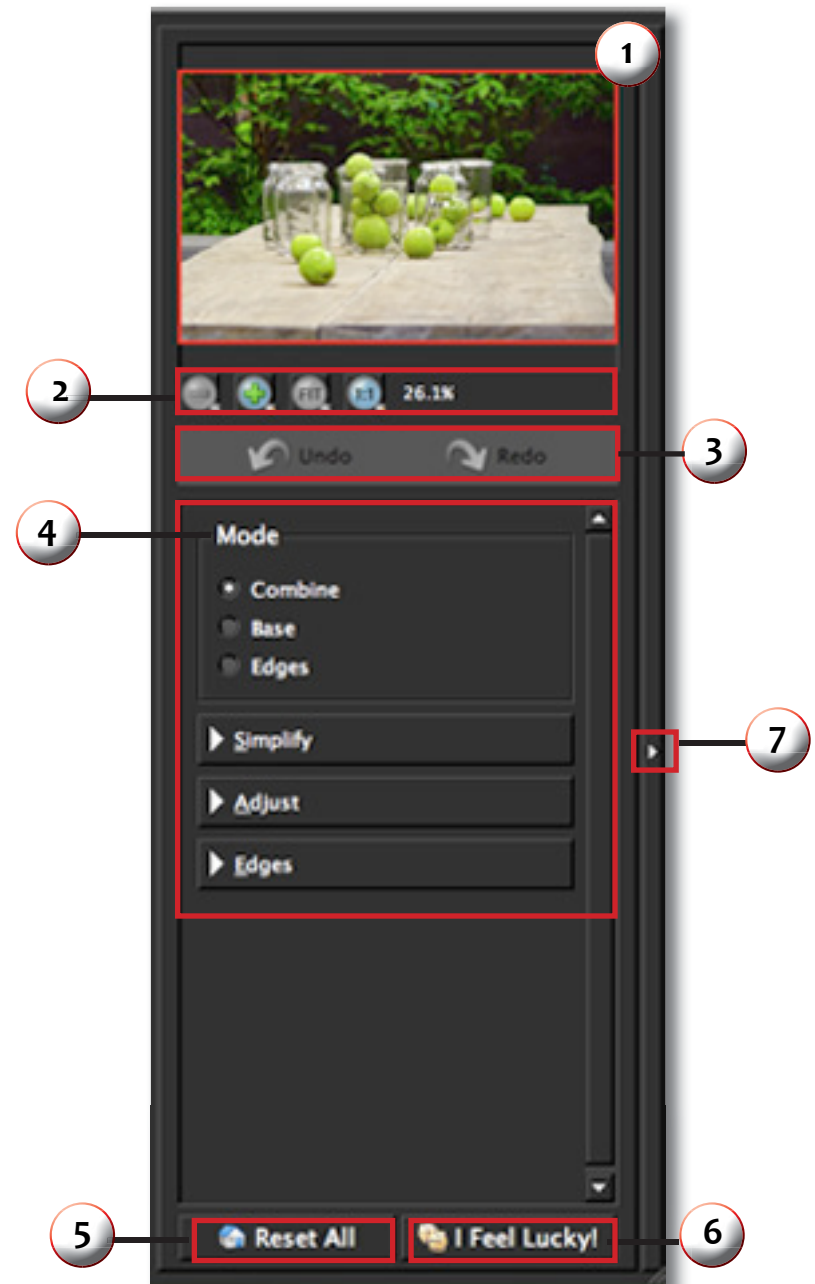
1. An adjustable user interface. Expand and collapse the preset panel and the tool panel for an adjustable workspace.
2. Improved noise reduction tool. For the removal of small instances of noise.
3. Collapsible tabs. Open and close the parameter tabs as you need them.
4. Preset Navigation. Use the up / down arrow keys navigate the preset list and display the selected preset thumbnail (in preset preview window). Use the return (Enter) key to apply the currently selected preset.
5. Quick Slider Reset. Double click on the slider name to reset default slider values.





Topaz Simplify 3 features a great interface and easy to use tools.

1. **Preview Navigator** - Displays the region of the preview image you are currently focused on.
2. **Zoom** - Allows you to zoom in and out of specific areas of your image to allow for more precise selections.
3. **Undo / Redo** - Allow you to undo or redo previous steps.
4. **Parameters** - Your slider controls for making your detail and color enhancements.
5. **Reset All** - Allows you to reset all of the sliders in all of the tabs to zero.
6. **I Feel Lucky!** - Allows you apply randomized settings. This is useful when you want to experiment with different settings.
7. **Panel Arrow** - Allows you to expand or collapse your left presets panel and right tools panel for a customize able workspace. Simply click the small arrow or grab the interface edge and drag it in or out.



Presets are a great way to speed up and simplify the whole process of using Topaz Simplify. Presets are set previews with previously defined settings that you can recall and reapply at any time.

We've included some default presets for you and, although they won't work for every single photograph, they serve as excellent starting points for customized tweaking.

1. Presets Preview

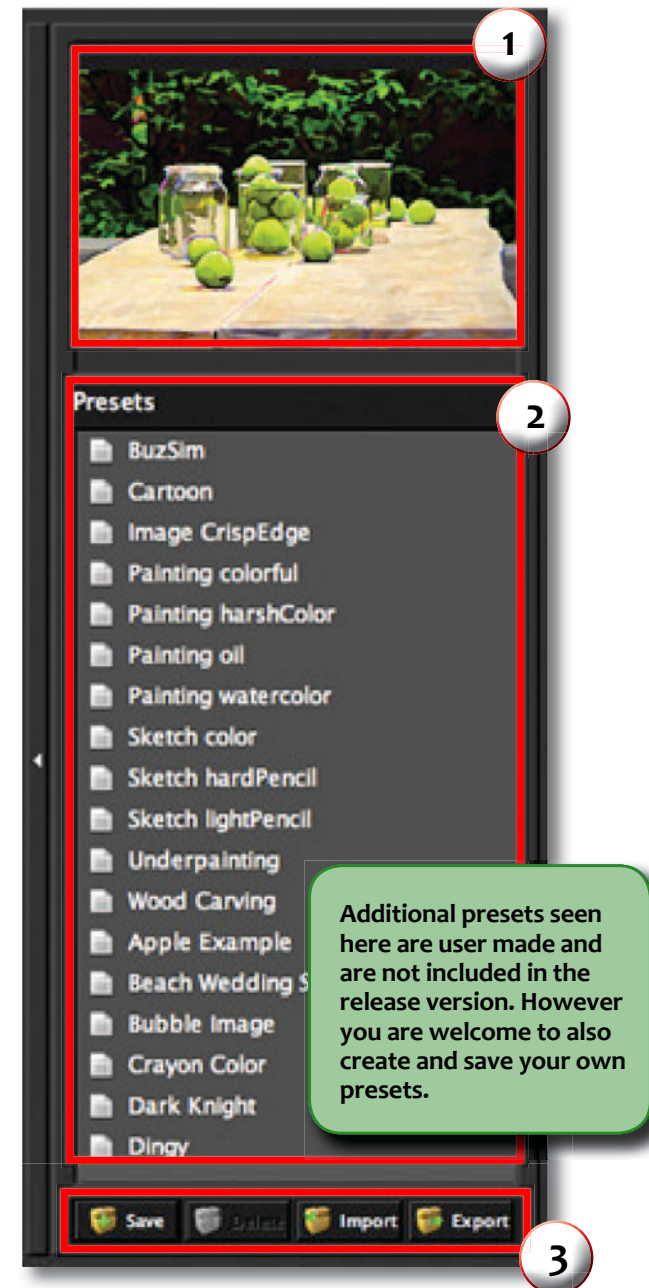
Provides “snapshots” of the available pre-defined parameter settings included in the presets list below.

2. Presets List

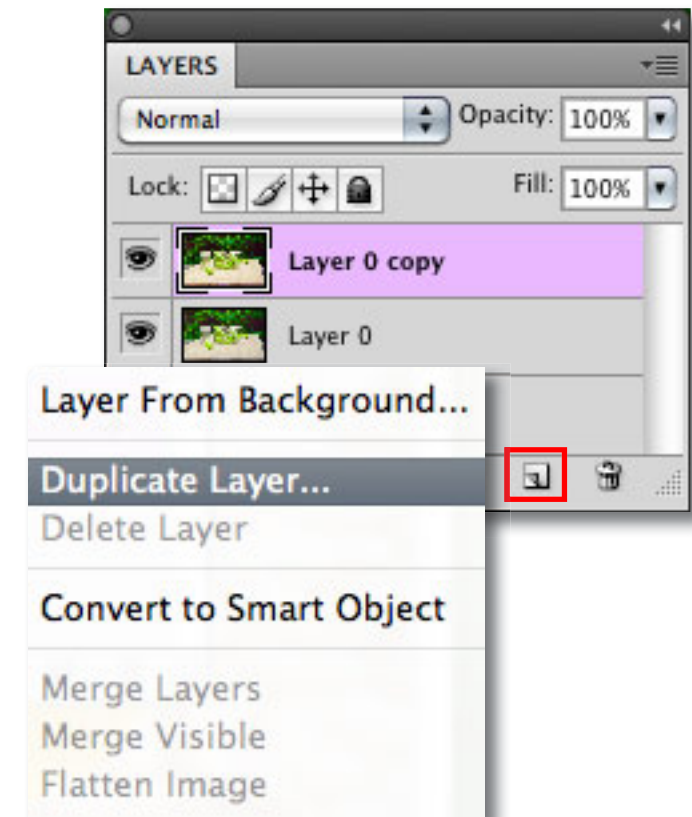
Lists all of the saved presets available for use.

3. Preset Options

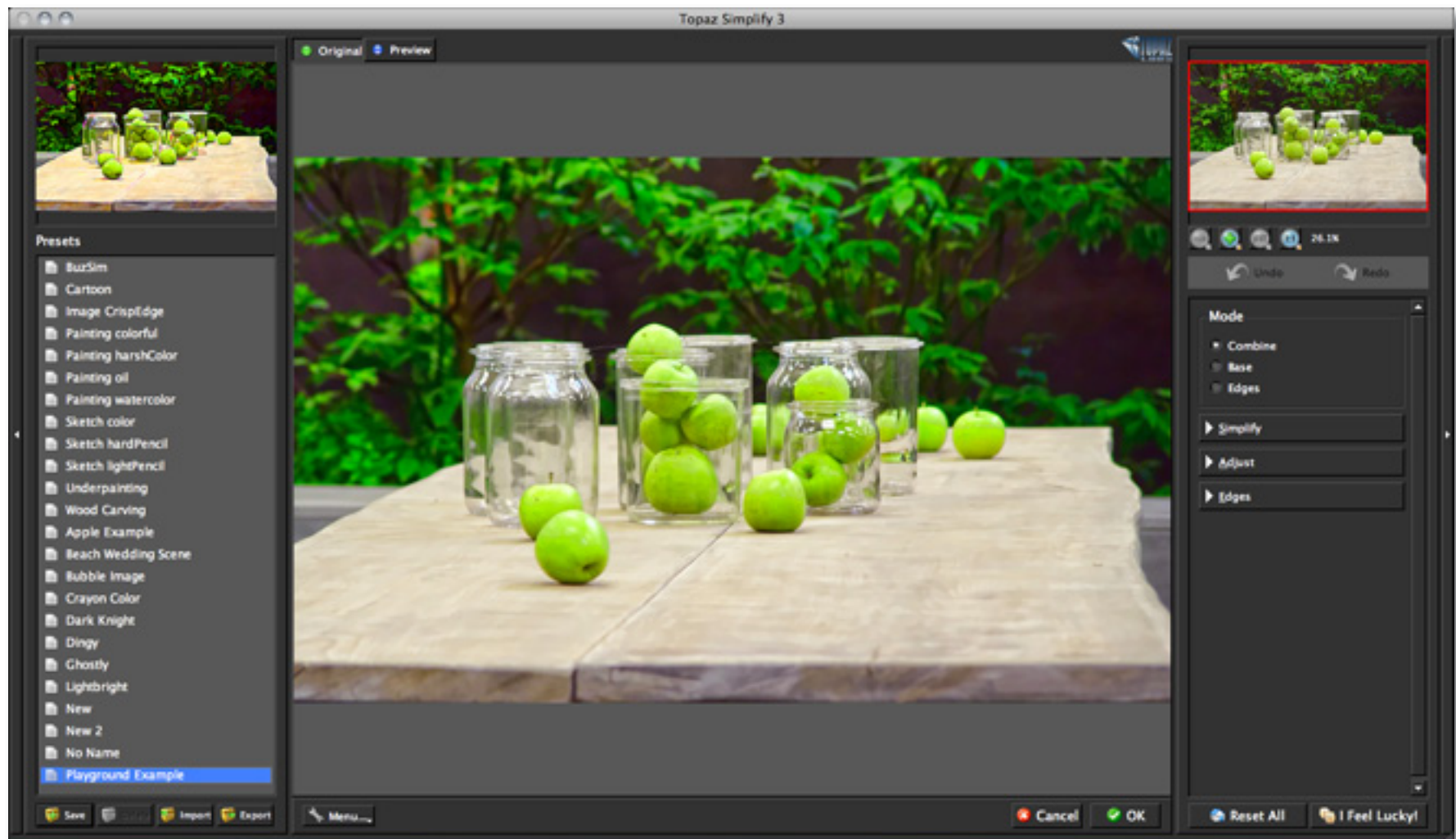
The preset options allow you to save your presets, delete presets (default presets cannot be deleted), import new presets and export your saved presets to share with your friends.



Open an image in Photoshop. Duplicate your background layer. Right-click on your image layer in your layers and select “Duplicate Layer”. You can also achieve this by selecting your image layer and dragging it down to the new layer icon. Then go to Filter -> Topaz Labs and select Simplify 3.



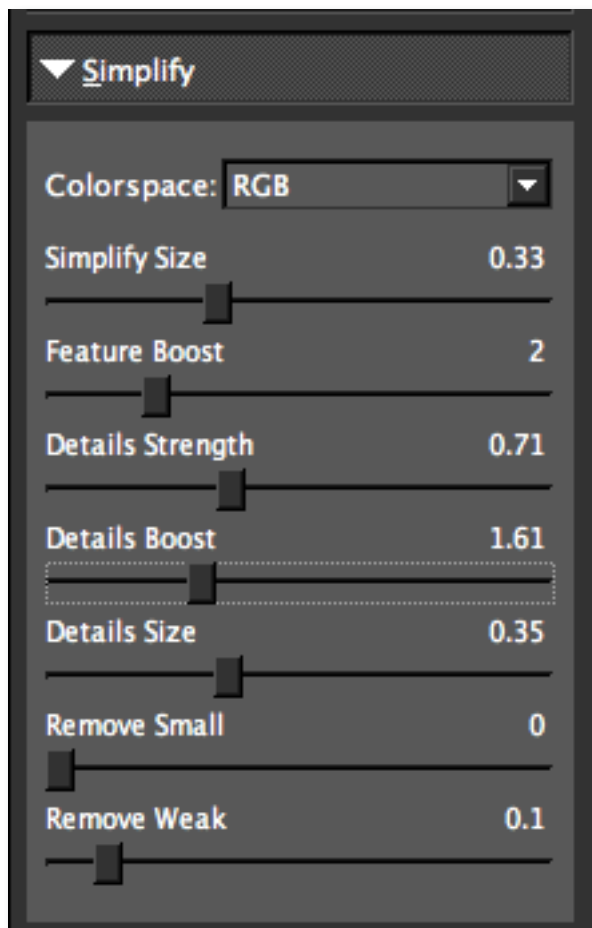
Once your Simplify interface opens you can start making your adjustments. If desired, you can select one of the default presets to use as a starting point and then make additional manual adjustments from there to perfect your image look. For this example we will select the Painting Oil preset and apply it to the image.



If you are satisfied with the preset adjustments then you can click “OK” to process your image and save it back to Photoshop.

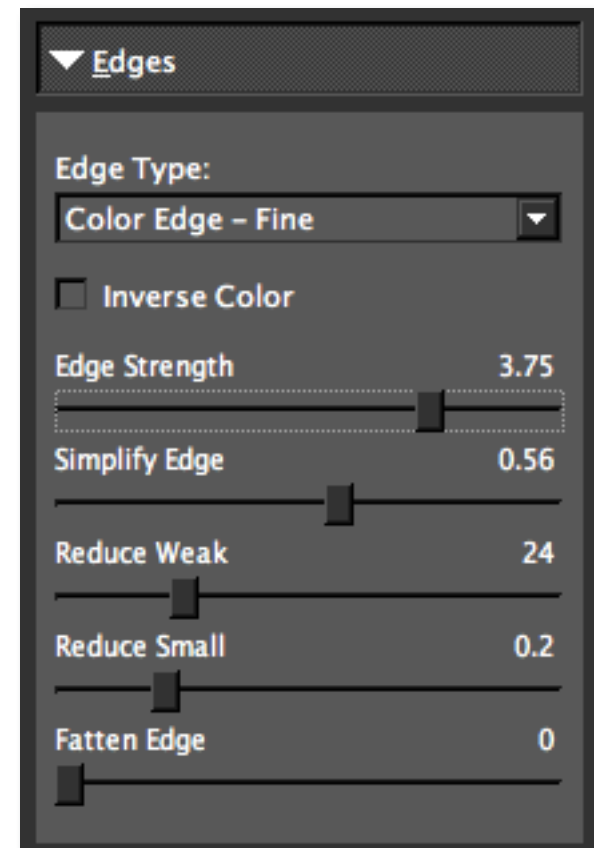
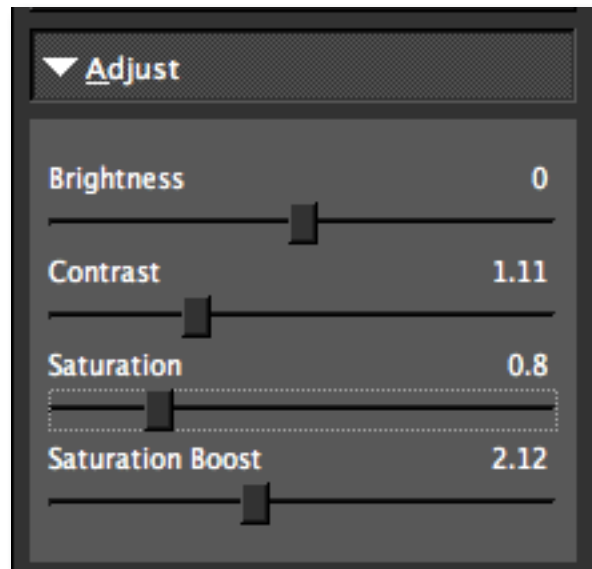
If you would like to make some additional adjustments to your Simplify settings then you can do so by adjusting any of the sliders in the four tabs manually until you achieve your preferred image results.

Start in the Simplify tab. Slowly adjust the sliders until satisfied with the result. For this example we will change the Colorspace to RGB and increase the Details Strength, Details Boost and Details Size sliders, however you are welcome to adjust as many of the sliders as you would like. When you are happy with the Simplify settings, move to the Adjust tab.



The Adjust tab allows you to enhance the color in your image. For this image we will slightly increase the Contrast, Saturation and Saturation Boost sliders to give the image a little more richness in color.

When you are happy with the Adjust settings you can move on to the Edges tab. For this example we will slightly lower the Edge Strength slider. You can make additional adjustments here in the Edges tab if you would like. Once you are happy with your settings, you can click OK to process your image and watch it transform into an artistic masterpiece.





Before Topaz Simplify



After Topaz Simplify

This Topaz Simplify 3 Quick Start Guide is for users who are familiar with the image enhancement process and who want to jump straight into using Topaz Simplify.

For a more in-depth and comprehensive break down of using Topaz Simplify 3 please view the Topaz Simplify 3 User Guide.

The User Guide was automatically installed on your computer when you installed Topaz Simplify 3.

Here is how to access it:

MAC: HD -> Library -> Application Support -> Topaz Labs -> Simplify 3 -> Docs



WINDOWS: Computer -> C:/ -> Program Files -> Topaz Labs -> Topaz Simplify 3 -> Docs

You can also watch video tutorials online at: <http://www.topazlabs.com/tutorials/Simplify>

Topaz Simplify uses some shortcut keys to speed up your workflow. Many of these keys are similar to those in Photoshop. The following keys work at all times.

Action	MAC Shortcut	PC Shortcut
View Original Image	Spacebar	Spacebar
Reset All	CMD-ALT-R	CTRL-ALT-R
Zoom to Fit	CMD-o	CTRL-o
Zoom to 100%	CMD-ALT-o	CTRL-ALT-o
Zoom In	+ or CMD - +	+ or CTRL - +
Zoom Out	- or CMD - -	- or CTRL - -
Undo	CMD -Z	Ctrl - Z
Redo	CMD - Shift - Z	Ctrl - Shift - Z

ADDITIONAL SHORTCUTS

Action	Shortcut
S	Expands / Collapses Simplify Tab
A	Expands / Collapses Adjust Tab
E	Expands / Collapses Edges Tab
Left or Right Arrow Key	Scrolls through presets
Return (enter) key	Applies selected preset
[key	Reduces selected slider value by 0.1
] key	Increases selected slider value by 0.1
Home Key	Set the slider value to minimum
End Key	Set the slider value to maximum
Double-click slider name	Resets the slider value to 0



Check out our new **Forum** and our **blog** for tutorials, tips and updates from Topaz Labs!



Follow us on Twitter for notifications of recent news and easily get in touch with us whenever you feel like it!



Find us on our Facebook page and network with other Topaz users!



Participate in the entirely user-led Topaz Flickr group for a helpful and highly active community for Topaz Photoshop plug-ins!



Subscribe to our YouTube channel to keep up with any newly released product video tutorials!