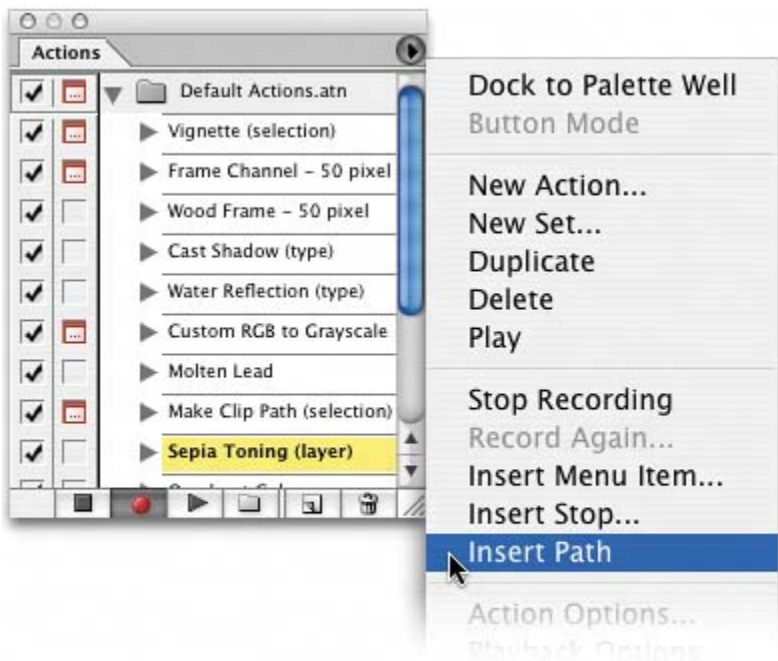
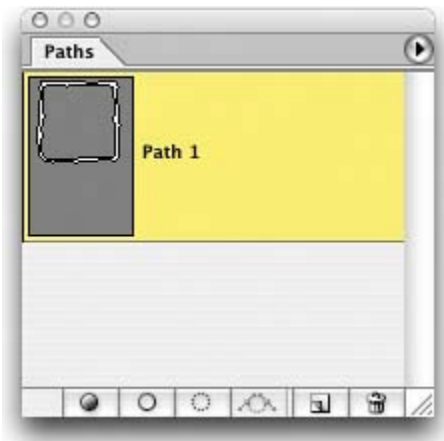


[< PREV](#)[NEXT >](#)

## EMBEDDING PATHS INTO ACTIONS



If you're creating actions and you want your action to include a path that you've created, you can do that, but you have to draw your path first, before you record your action. Once you've drawn your path, and it comes to the part of your action that requires the path, go to the Action palette's pop-down menu and choose **Insert Path** and that path will be stored along with the action.

[< PREV](#)[NEXT >](#)