



QUICK GUIDE

“This instruction note will briefly show you how to use liquify tool to modify the shape of an image/person and how to apply these awesome effects.”

✓ LOADING...

THERE ARE 3 WAYS TO LOAD AN ACTION (.atn):

-**BASIC:** To load an action using the “BASIC PROCEDURE”, go to your ‘Profile Files’ > click on ‘Adobe’ > go to the folder ‘Adobe Photoshop CS5’ > go to the folder ‘Presets’> you will see ‘Actions’ folder > just copy the atn file from this bundle and paste it inside this ‘Action’ folder.

Or paste this on folder address medium ‘[C:\Program Files\Adobe\Adobe Photoshop CS5\Presets\Actions](#)’

-**SUB:** To load an action using the “SUB PROCEDURE”, open your Adobe Photoshop > press Alt+F9 (that will bring up the ‘Actions’ palette > now click on the upper right arrow next to Master Diameter, and then on Load the ‘ACTION’.

-**QUICK:** To load an action using the “QUICK PROCEDURE”, simply double-click on the ACTION icon. It will automatically open in Photoshop.

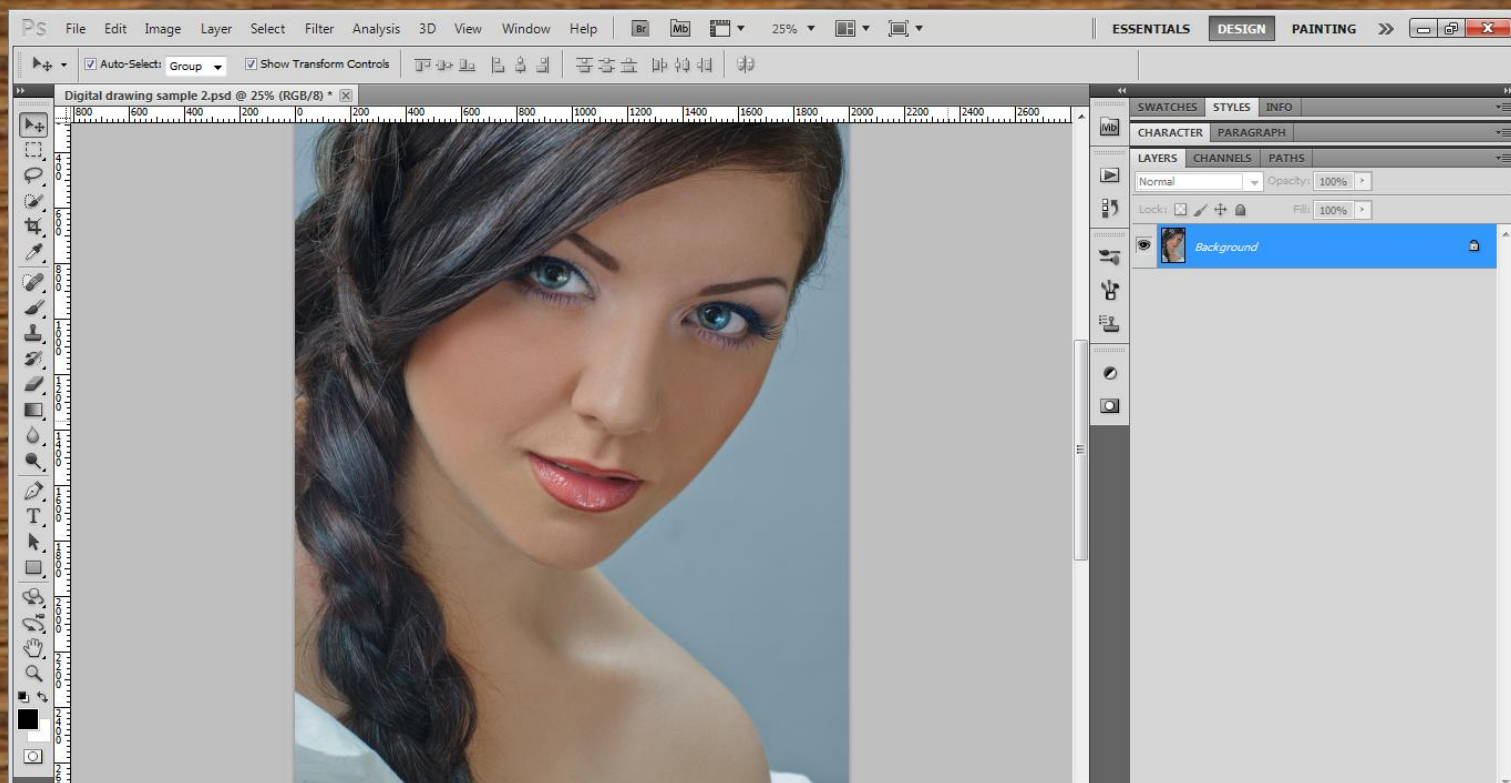
Any of the options listed above will serve you!

LOAD A PATTERN (.pat):

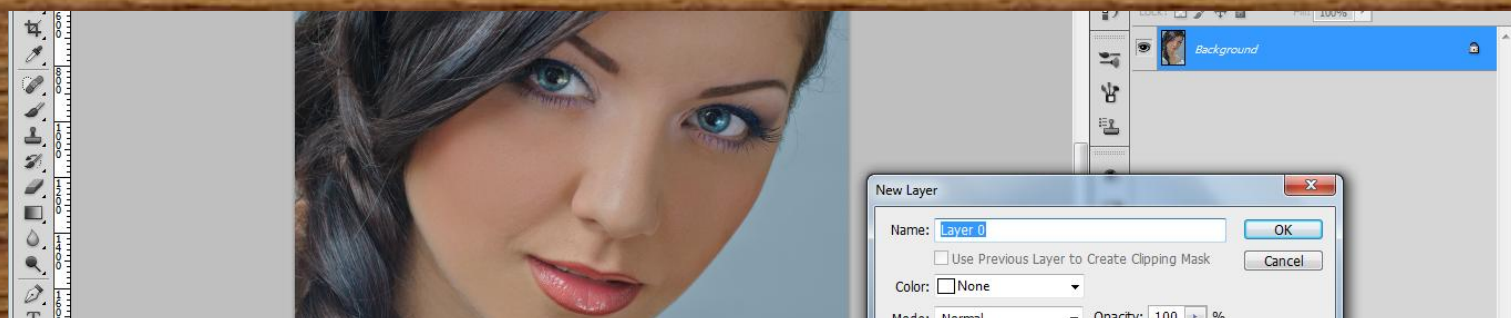
-**QUICK:** To load a pattern using the “QUICK PROCEDURE”, simply double-click on the PATTERN icon. It will automatically open in Photoshop.

✓ MAIN TASK...

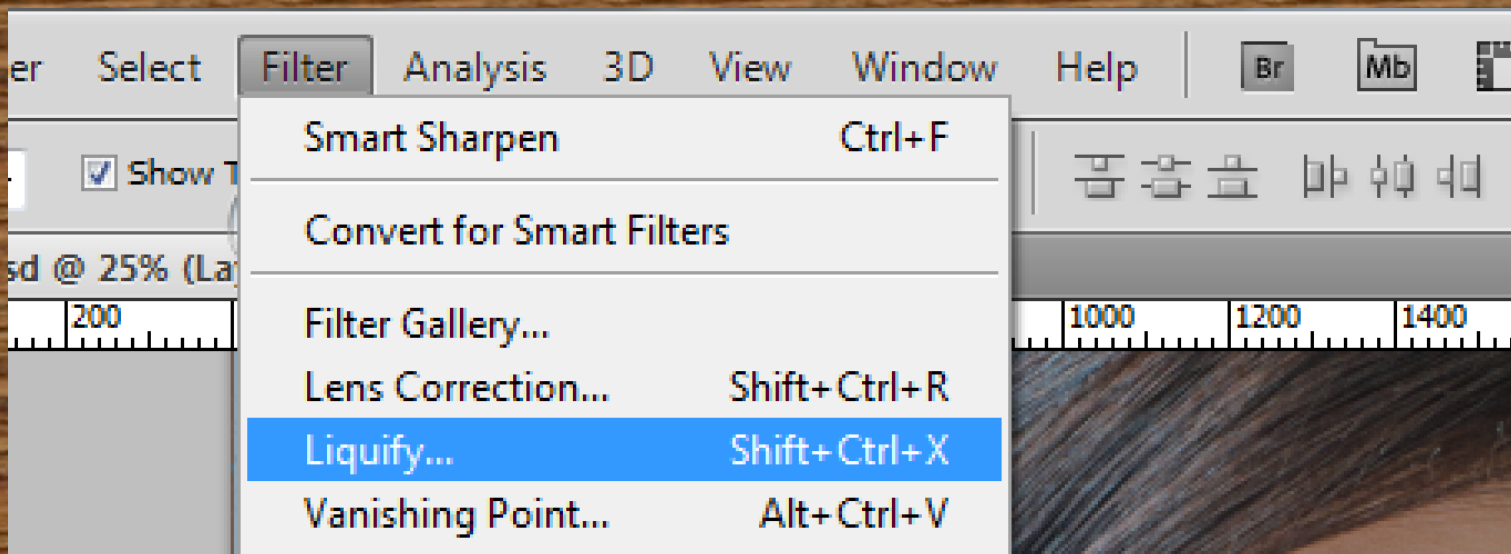
Open the photograph you intend to transform into photorealistic caricature.



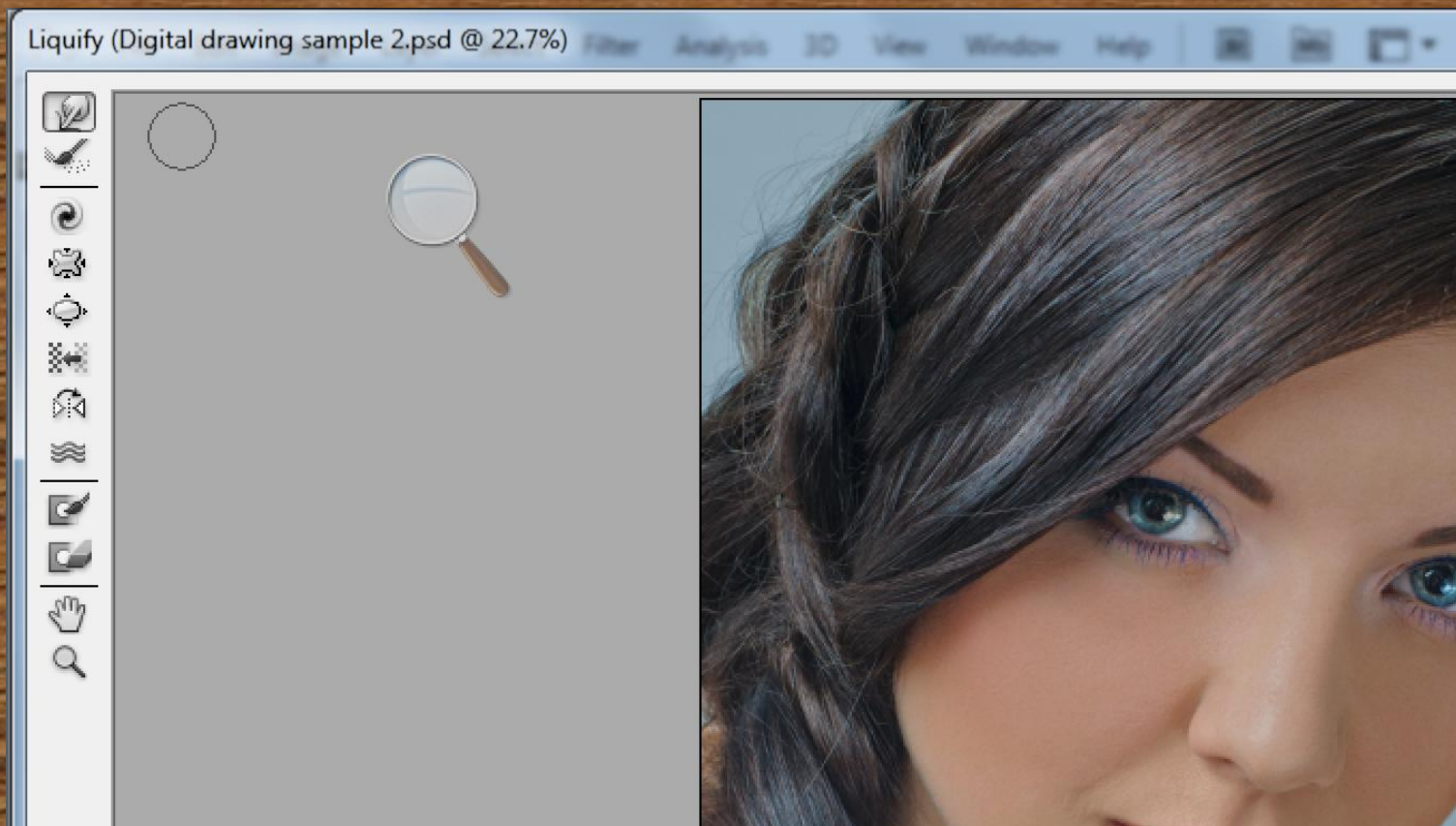
Double-click the background layer and press 'OK' to unlock it.



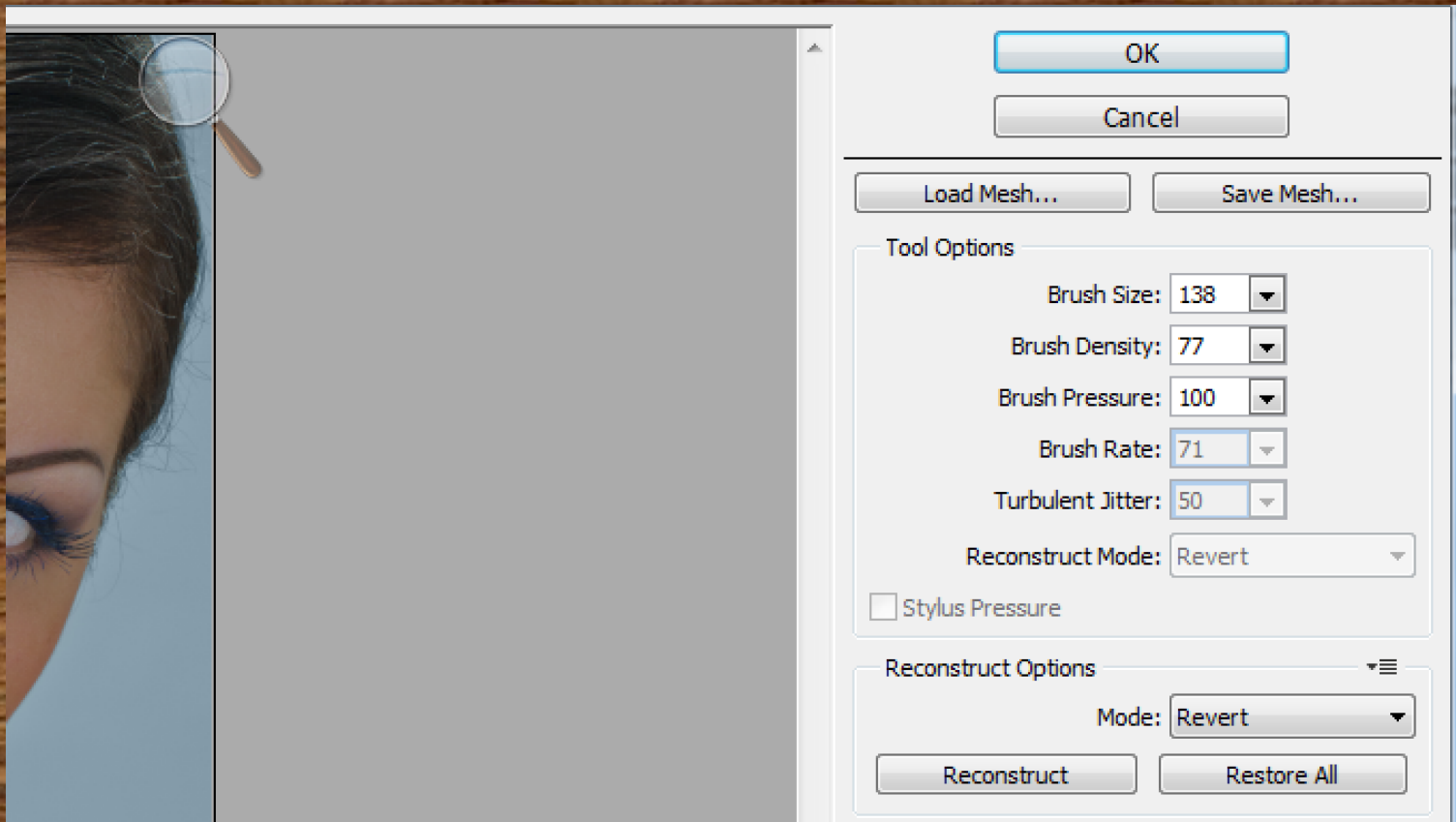
Go to filter and then liquify



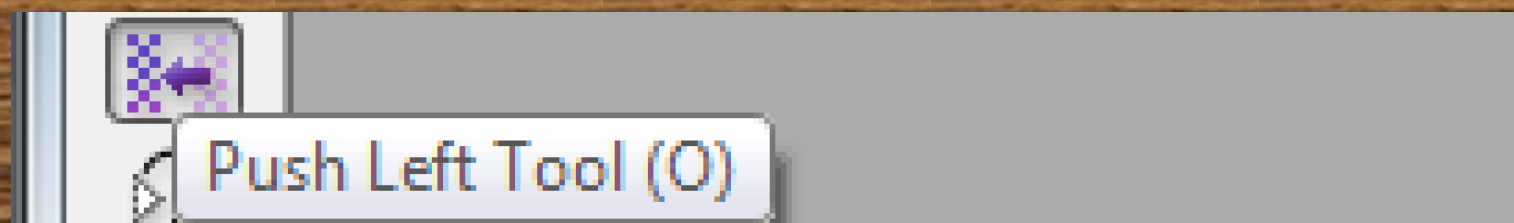
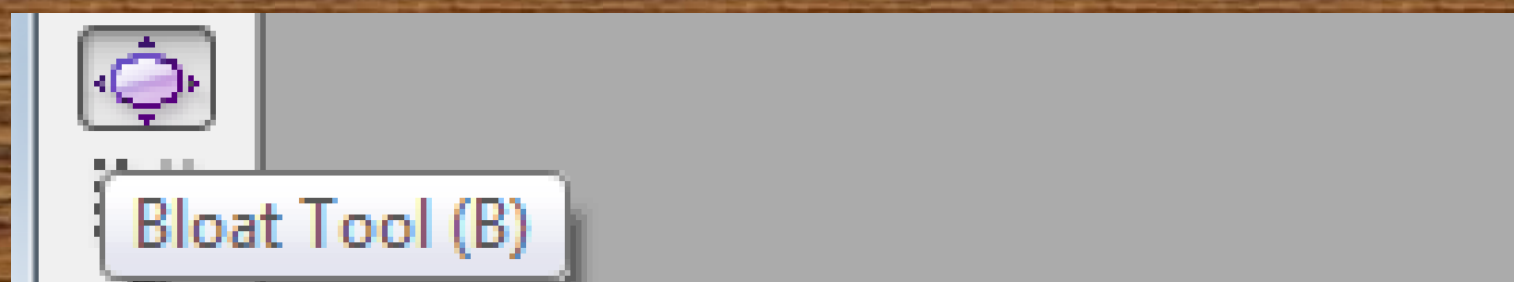
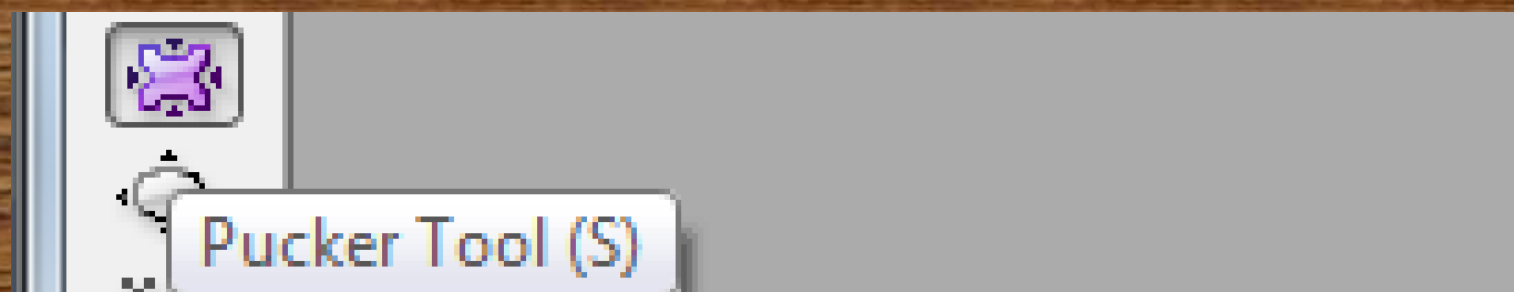
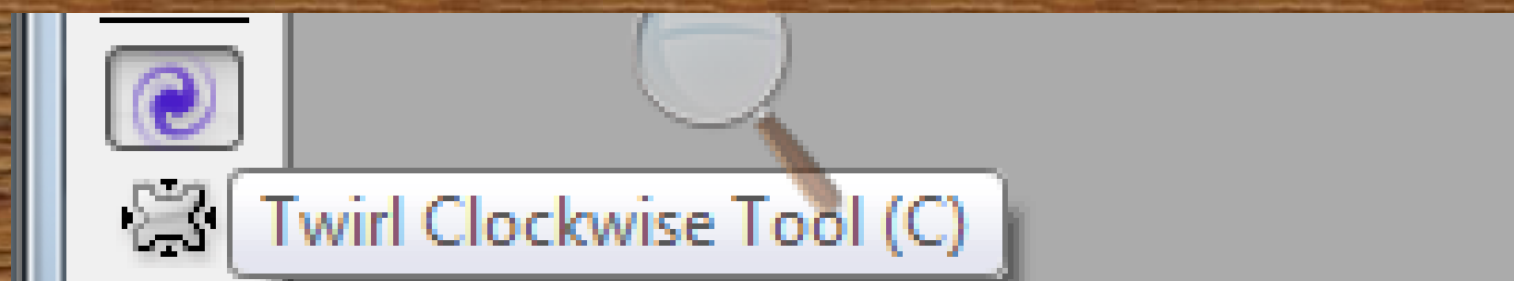
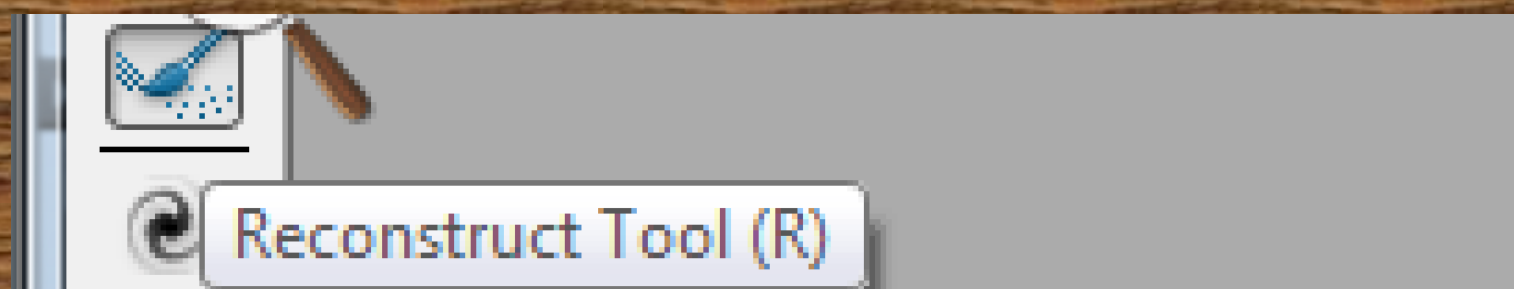
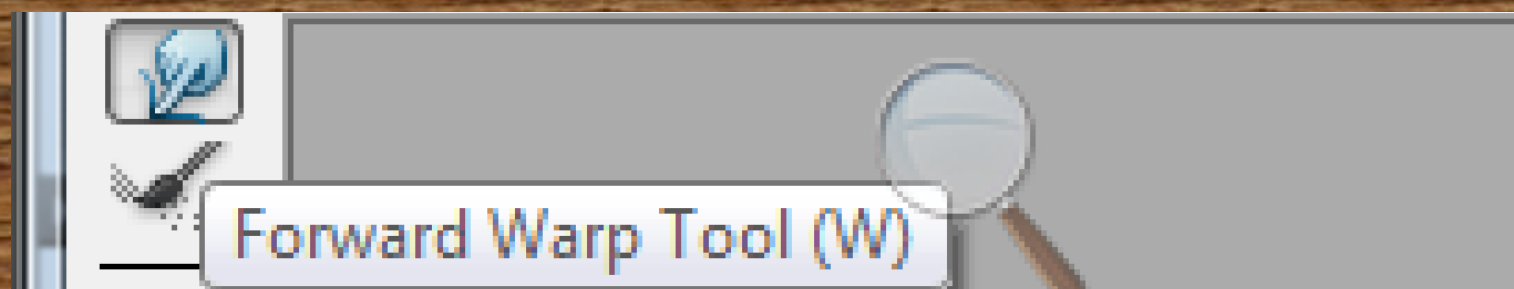
Here are the various tools in the liquify panel



And each of the tool has an adjustment panel like brush size, density, pressure and so on.

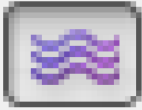


Liquify tools are as follow (the pressed tool icon bears the displayed tool name and the names given are how the tools function):





Mirror Tool (M)



Turbulence Tool (T)

All of the above are the main liquify tools you will play around with in order to achieve your own custom and artistic caricature.

Below are some additional tools in liquify panel –

MASKING

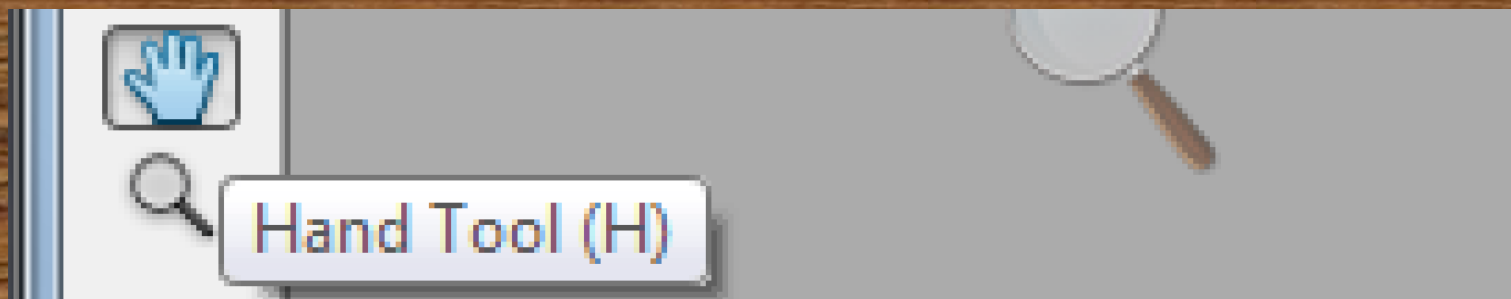


Freeze Mask Tool (F)



Thaw Mask Tool (D)

MOVING & ZOOMING



Or just hold SPACE BAR as you move your cursor

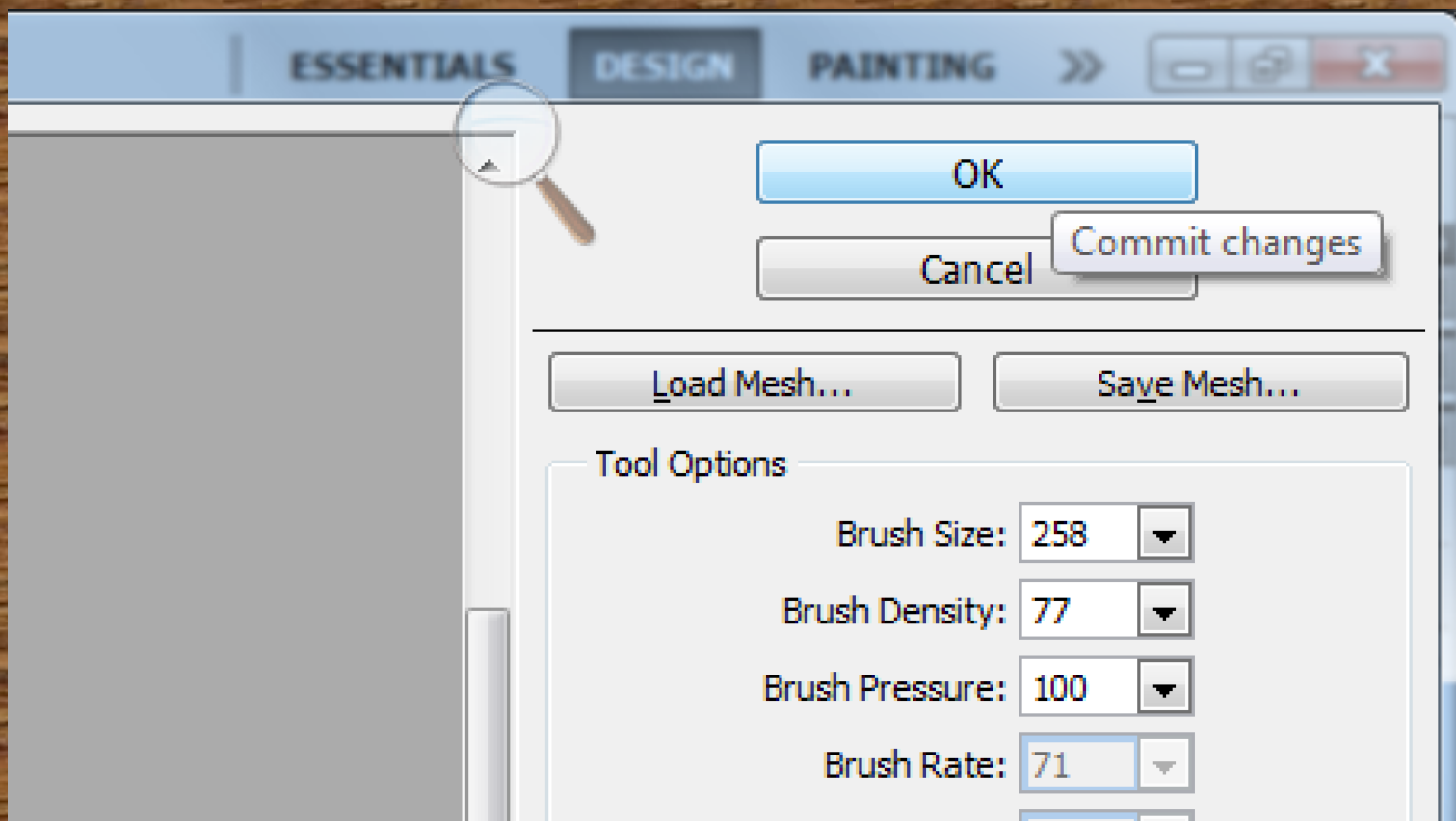


Or you can press Ctrl + to zoom in and Ctrl – to zoom out

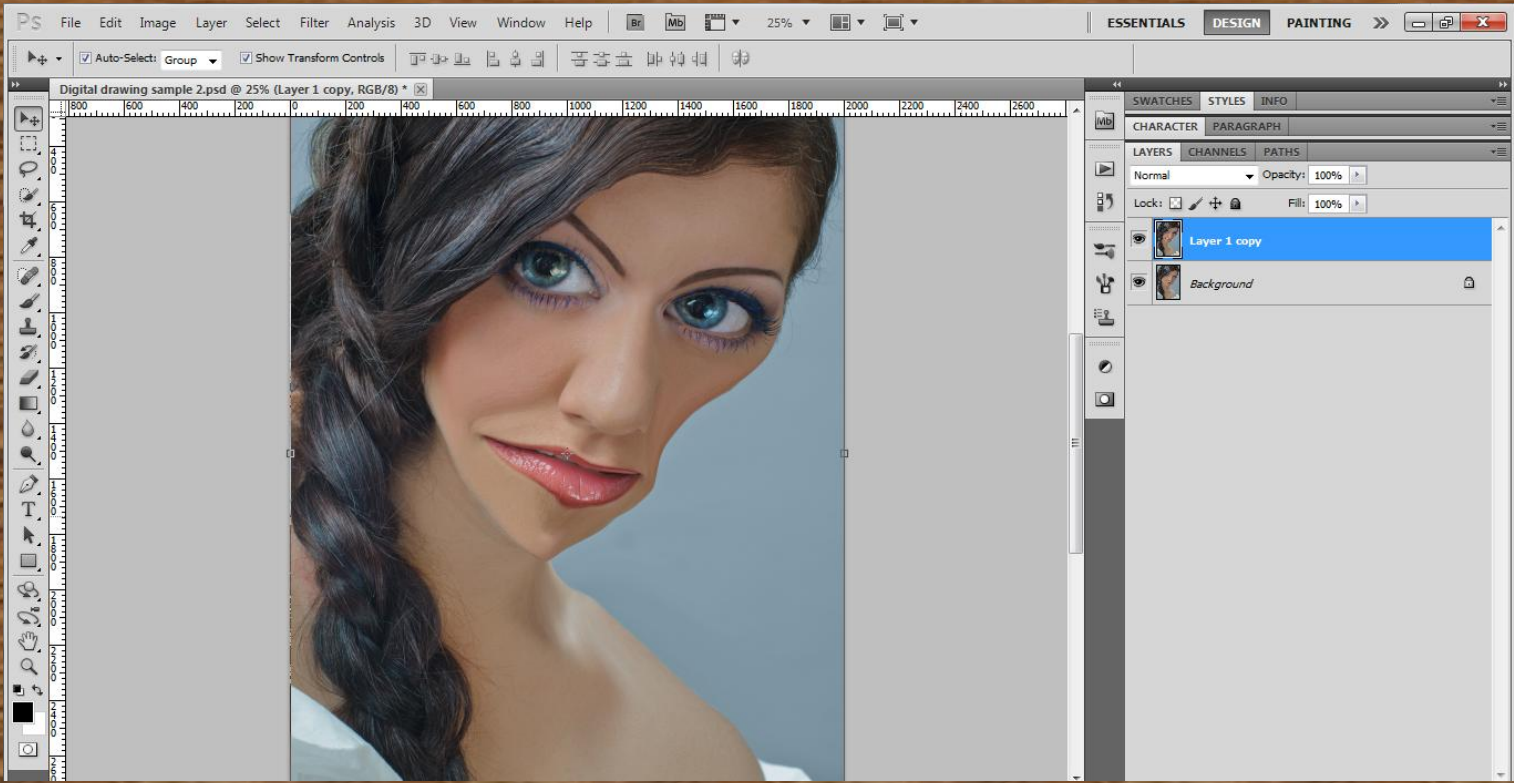
IN ADDITION:

To increase or decrease your brush press Shift] to increase and Shift [to decrease the size of your brush as you liquify/modify your image to represent a caricature.

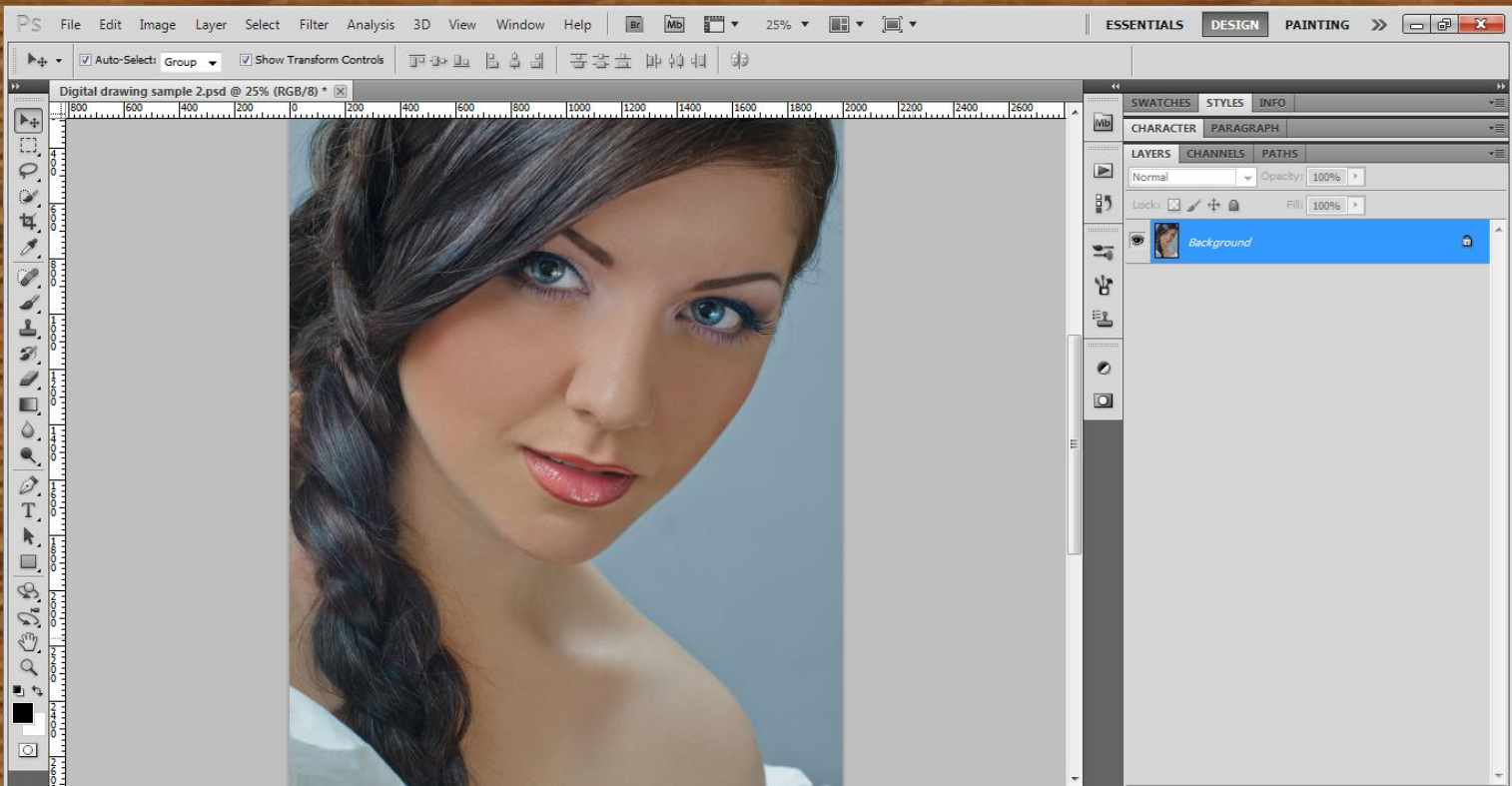
Play around with the tools until you have achieved a sound result. When you are done liquifying, simple press OK button to render changes.



Here is an example:

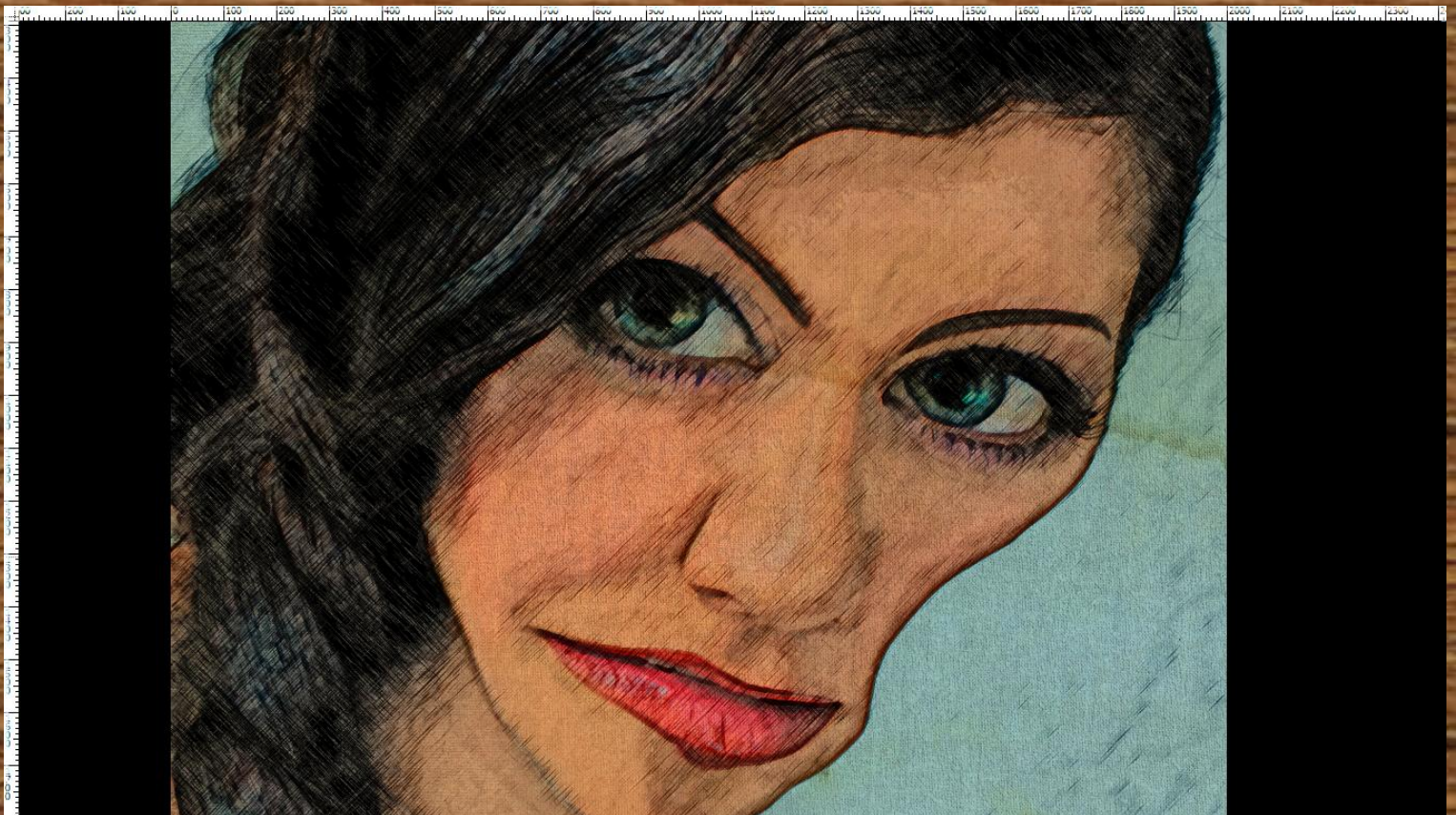
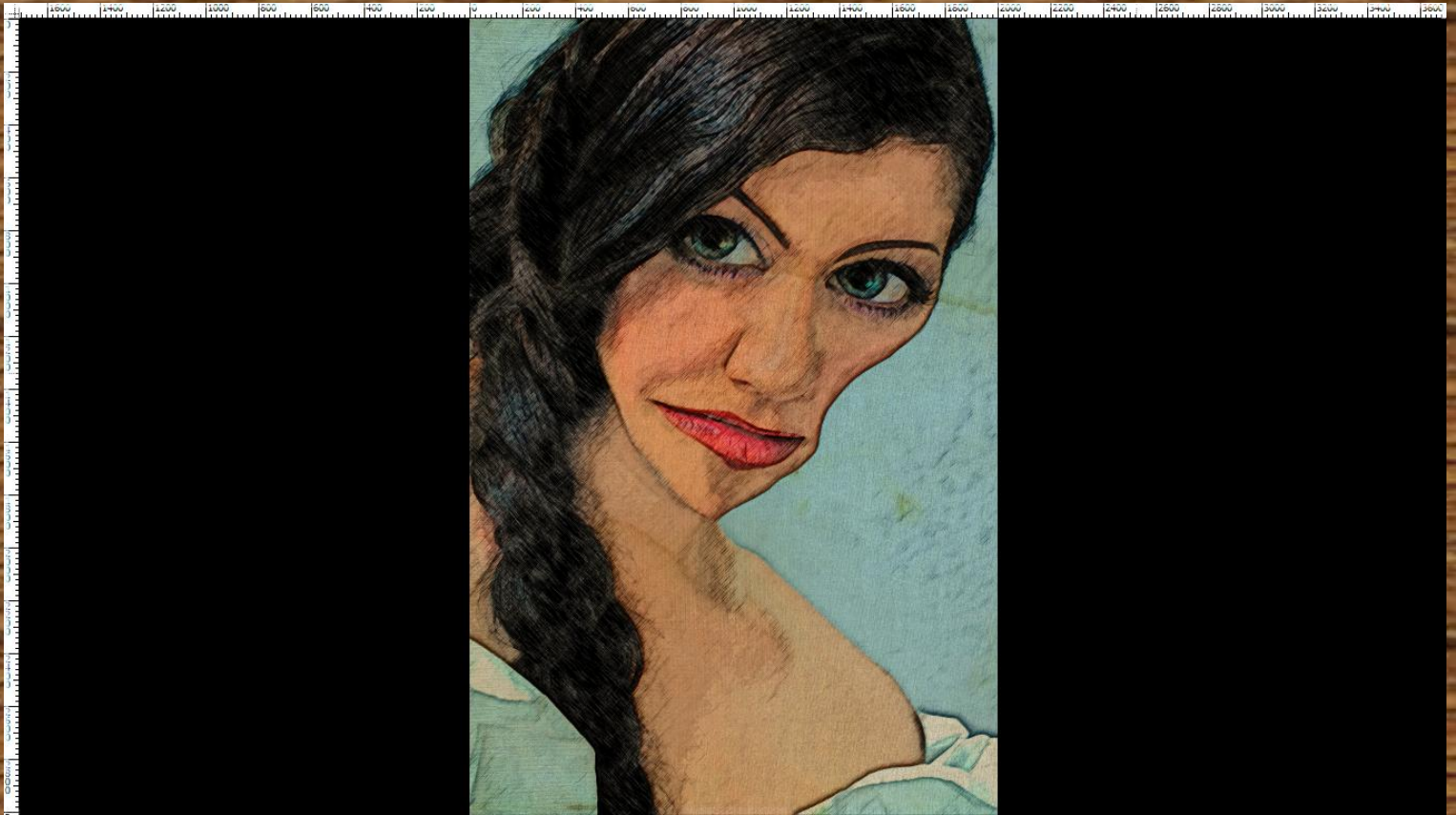


Before:



Go ahead and play either 'Digital drawing' or 'Digital painting' action to professionally draw or paint your modified image into a mind-blowing caricature image effect.

Here is the final result.



Totally awesome!

Thank you for purchasing this package. Feel free to rate it and also check out my other items on Envato. If you have any question, leave a message on the comment box or email me from my profile and I will get back to you as soon as possible. Godbless and Enjoy!



A CHARLES BROWN DESIGN