



QUICK GUIDE

“This instruction note will briefly show you how to use this package.”

✓ LOADING...

THERE ARE 3 WAYS TO LOAD AN ACTION (.atn):

-BASIC: To load an action using the “BASIC PROCEDURE”, go to your ‘Profile Files’ > click on ‘Adobe’ > go to the folder ‘Adobe Photoshop CS5’ > go to the folder ‘Presets’> you will see ‘Actions’ folder > just copy the atn file from this bundle and paste it inside this ‘Action’ folder.

Or paste this on folder address medium ‘<C:\Program Files\Adobe\Adobe Photoshop CS5\Presets\Actions>’

-SUB: To load an action using the “SUB PROCEDURE”, open your Adobe Photoshop > press Alt+F9 (that will bring up the ‘Actions’ palette > now click on the upper right arrow next to Master Diameter, and then on Load the ‘ACTION’.

-QUICK: To load an action using the “QUICK PROCEDURE”, simply double-click on the ACTION icon. It will automatically open in Photoshop.

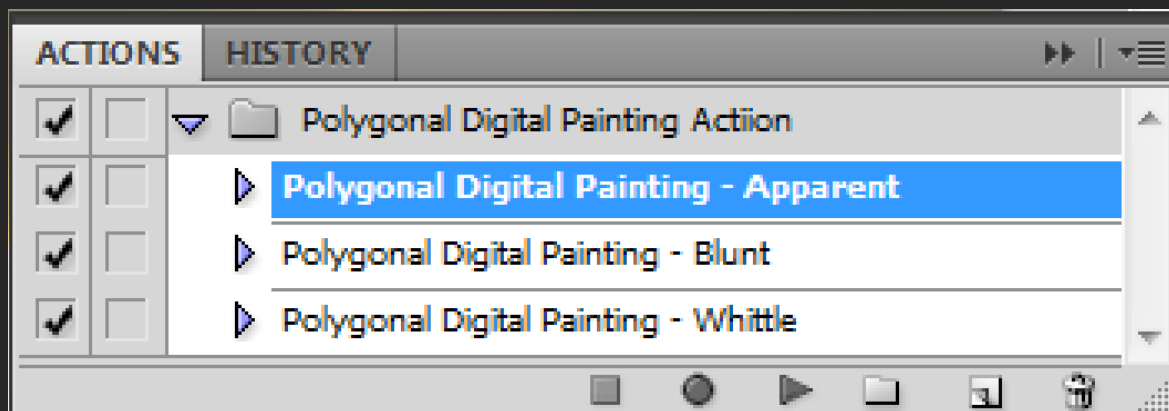
Any of the options listed above will serve you!

✓ MAIN TASK...

Please open the photograph you intend to transform into 'Polygonal Painting'.



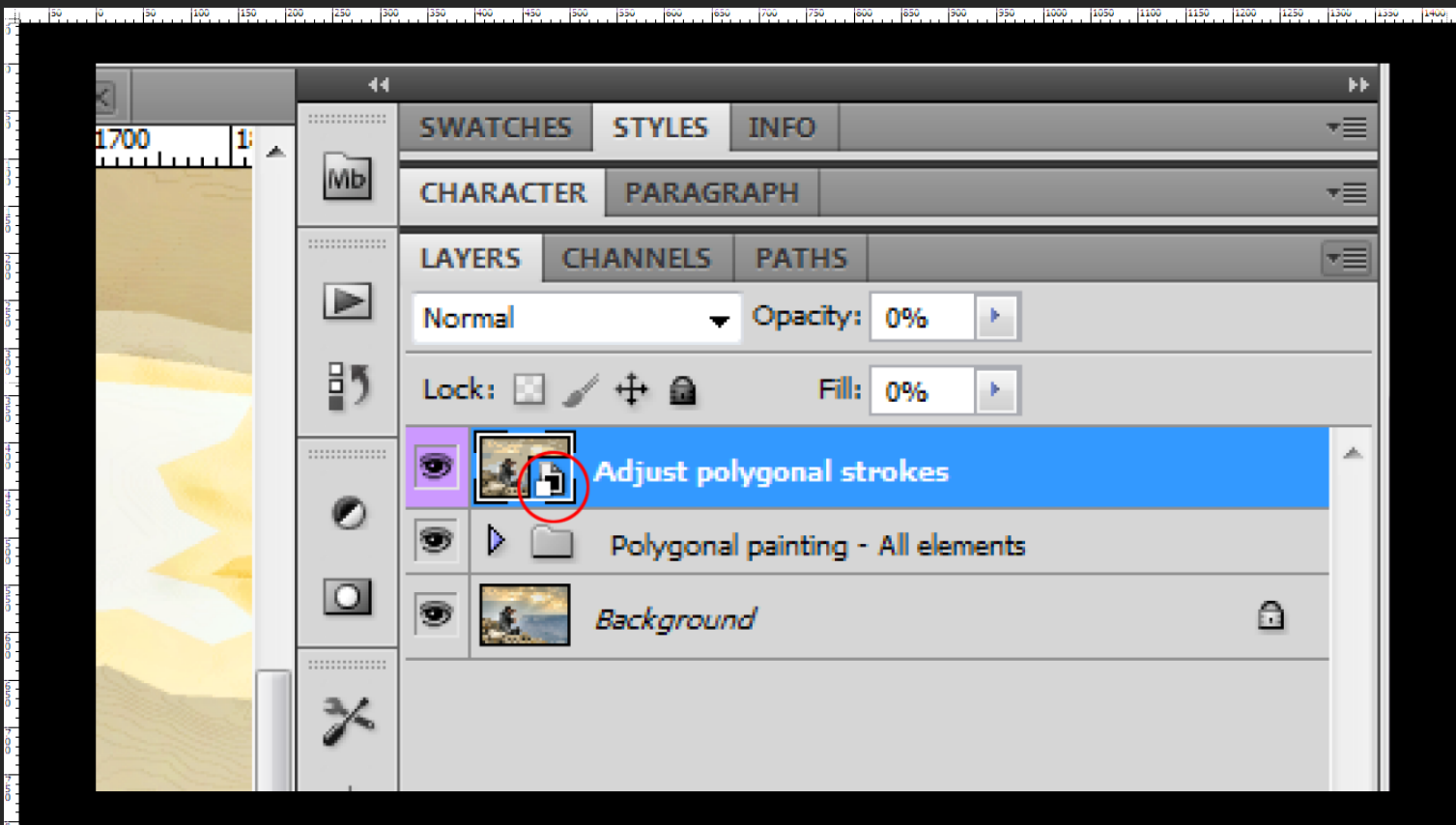
You can play any of the actions.



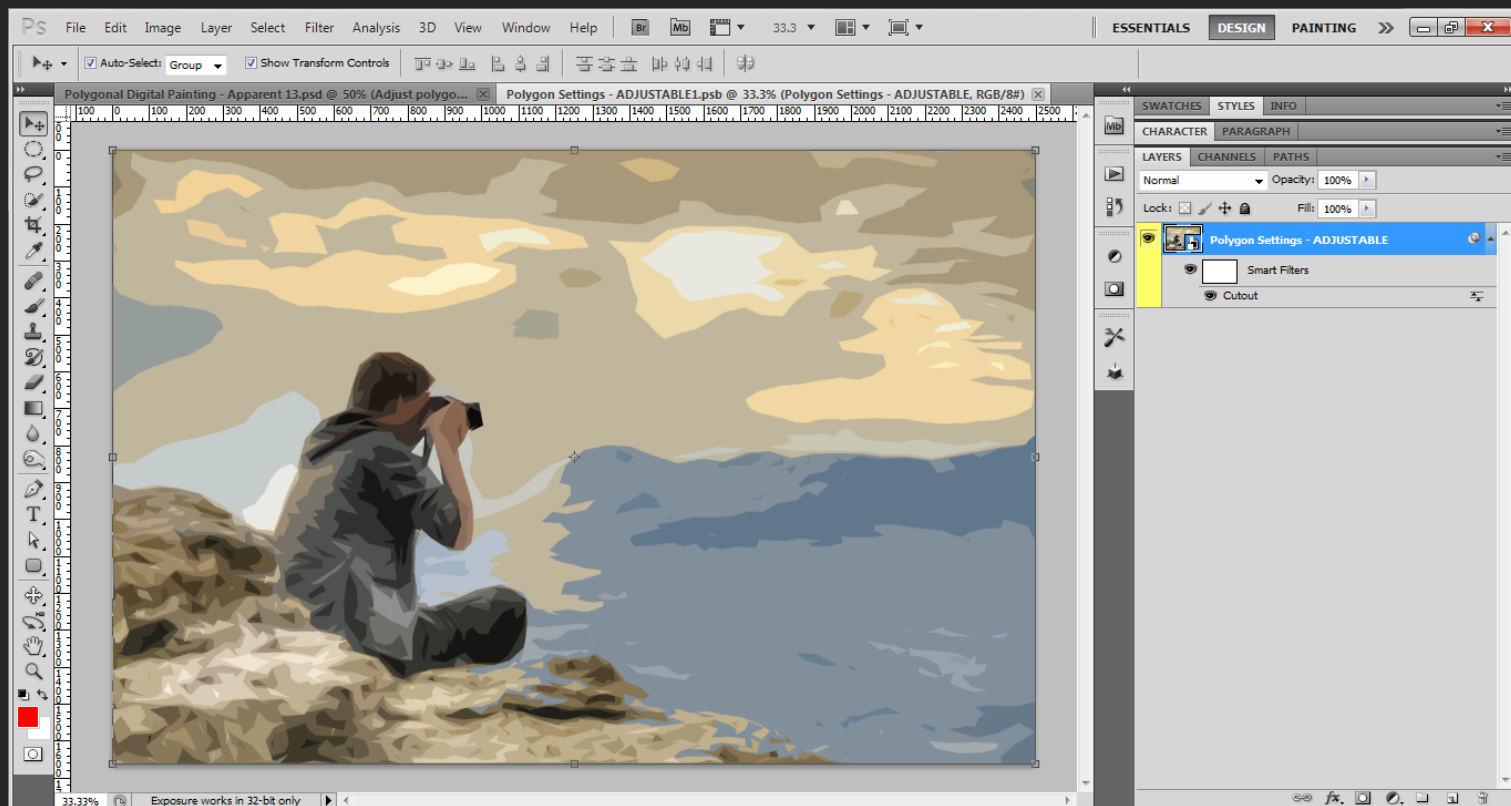
You will achieve awesome painting effect like this below.



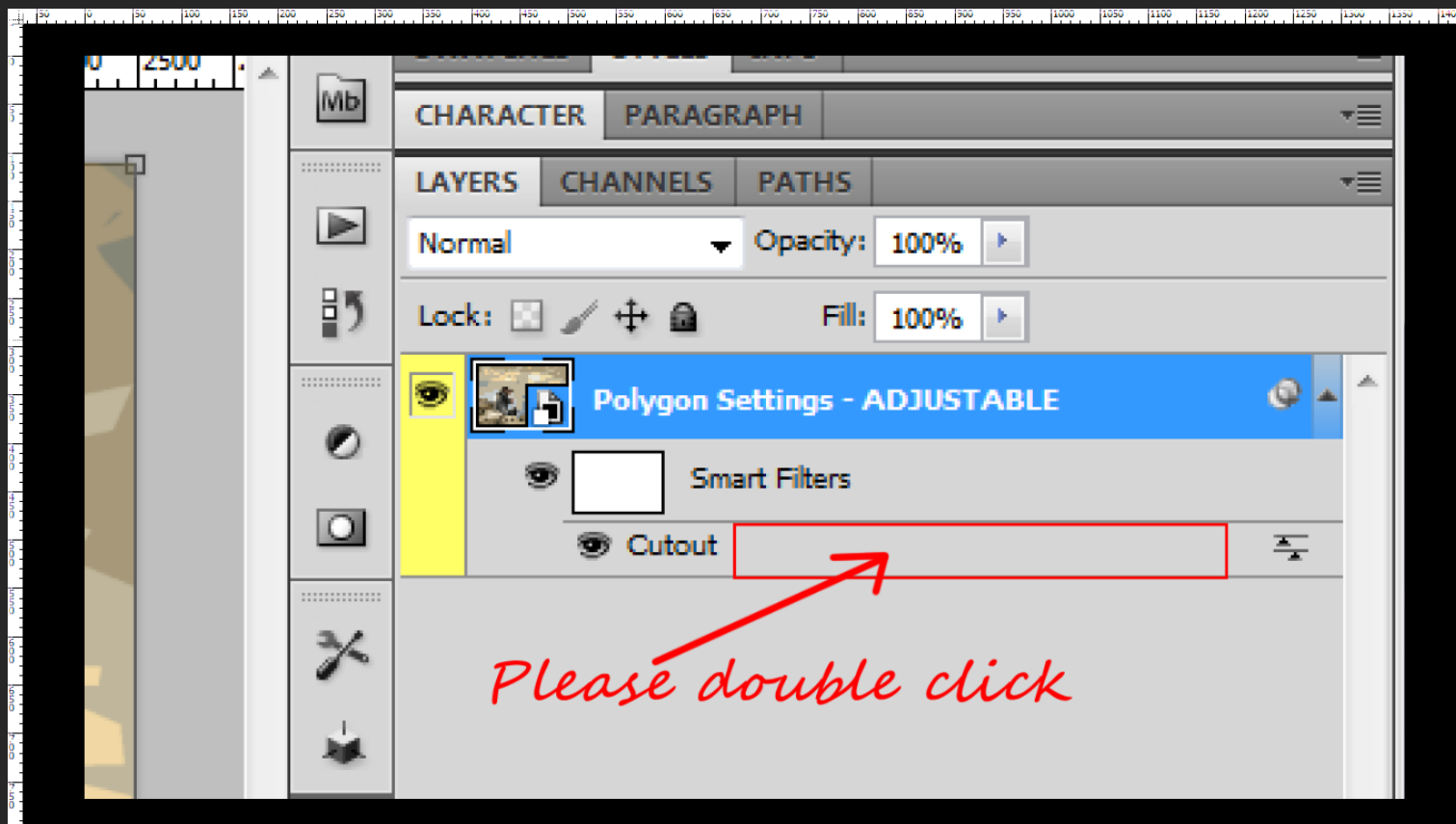
You can adjust the polygonal level numbers. To do that, please double-click the SMART OBJECT ICON of the layer 'Adjust polygonal strokes'.



It will transfer you to SMART OBJECT section where you will make the adjustment.

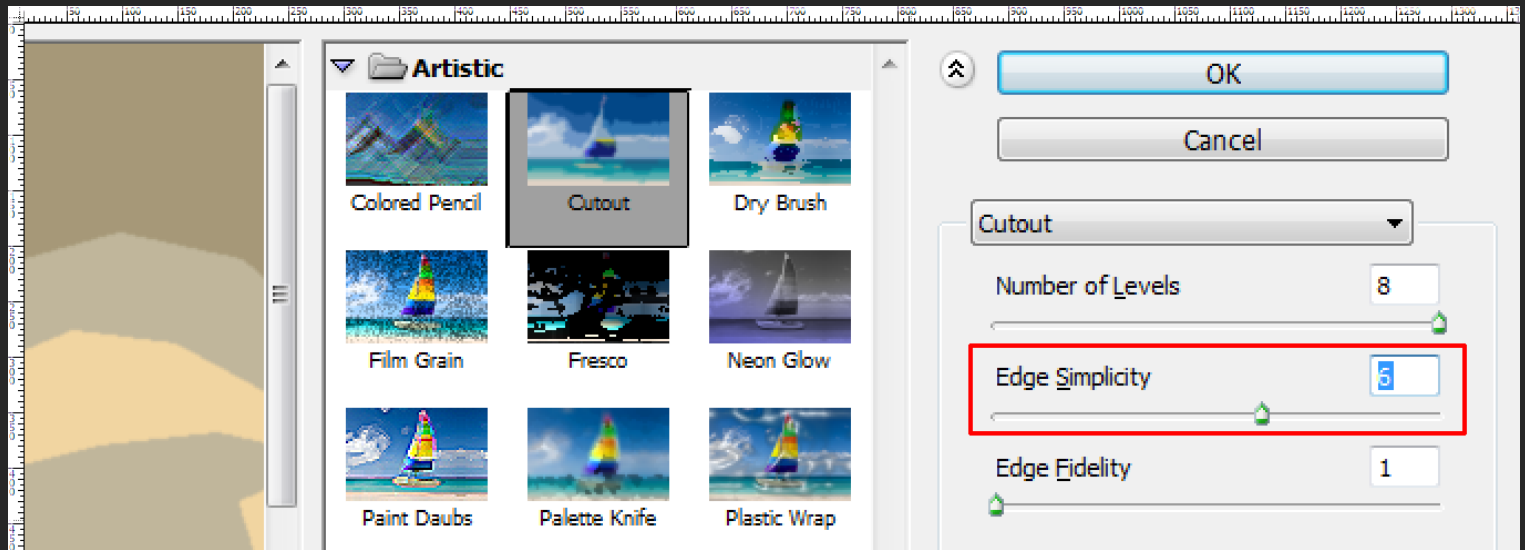


Please double-click the path where the arrow is point at.

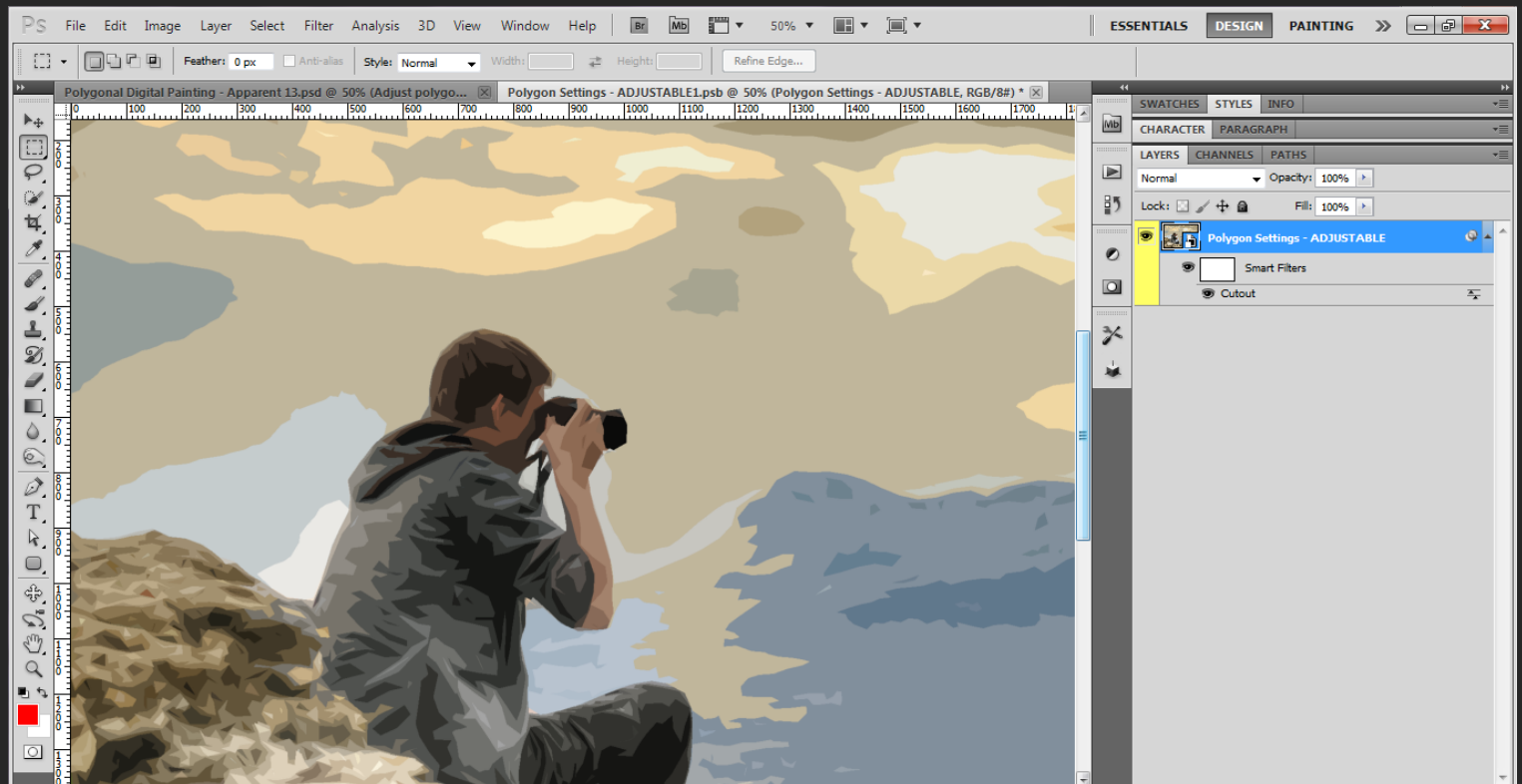


When “Artistic panel” shows-up, *please increase or decrease only the number of ‘Edge Simplicity’*. You can also adjust other options like ‘Number of levels’ and ‘Edge fidelity’ but it might destroy the entire painting polygon unless you are very careful adjusting the numbers while looking at the preview.

Please press OK when you finish all the adjustments.



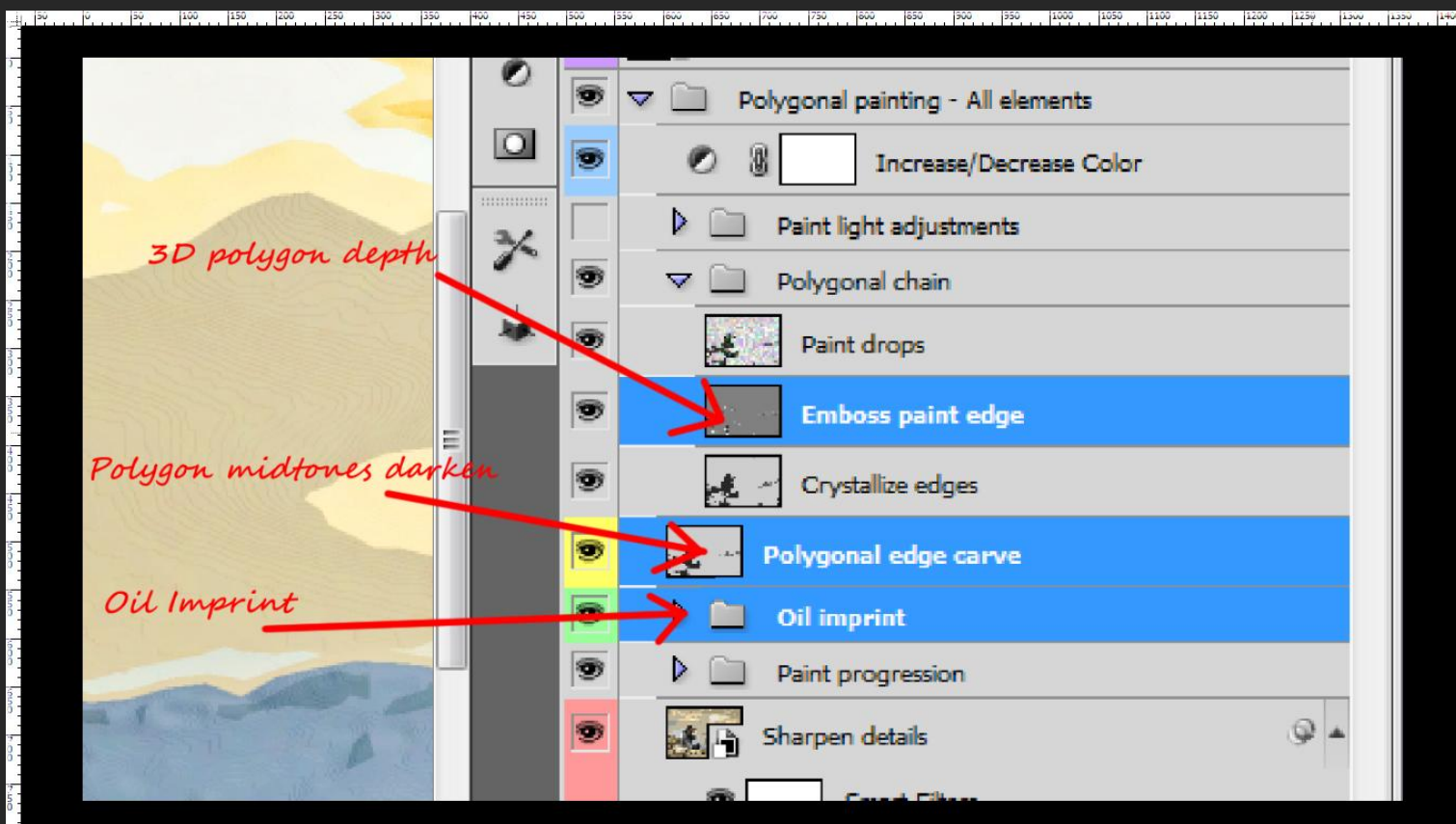
Please press Ctrl (CMD in Mac) + S to save the modification. You can close the window and go back to the main window.



It will update the entire settings.



The results of these three differ depending on the image you are using. You can always adjust them or make any of them visible or invisible.



With this package, your image will never be the same. It produces excellent and photo realistic result.



Totally awesome! Very easy to use and just one click!

Thank you for purchasing this package. Feel free to rate it and also check out my other items on Envato. If you have any question, leave a message on the comment box or email me from my profile and I will get back to you as soon as possible. Godbless and Enjoy!

