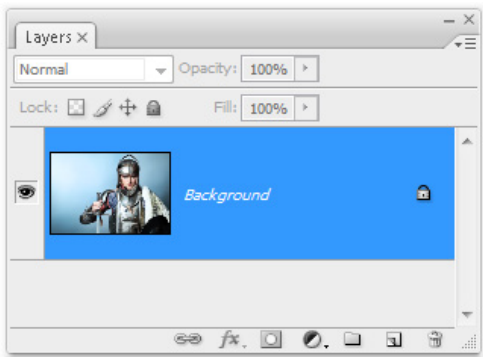




BEFORE YOU RUN THE ACTION

1. Preparing your photo document:

- Check the layer panel and make sure your photo has only a single **background** layer (*see the picture below*). To set your photo as a *background*: Go to **menu bar**, then select **Layer > Flatten Image**.

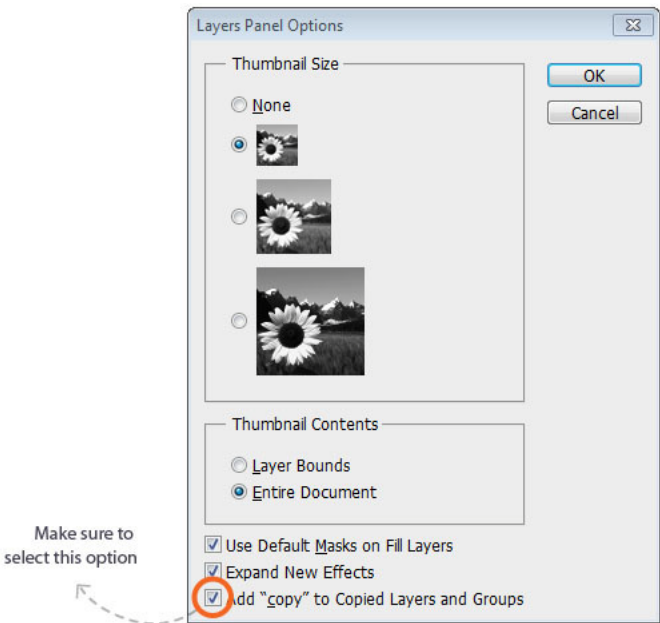


The "*Background*" layer probably will have a different name if you use non-English Photoshop version - That's fine, just keep it as it is.

- Your photo must in **RGB color mode**.
To set the color mode: Go to **menu bar**, then select **Image > Mode > RGB Color**
- Your photo must have **8 bits** color.
To set the color bit: Go to **menu bar**, then select **Image > Mode > 8 Bits/Channel**.
- Make sure the photo resolution is **72dpi** or **higher**

2. Preparing your Photoshop:

- **Make sure the "Add 'copy'..." option is selected.**
To do this:
 - Go to layer panel and open the option menu (click the dropdown icon on the top right corner of the Layer Panel).
 - When the menu is already open, click on "Panel Option" to open the Layers Panel Options.
 - Next, select (checked) the "**Add 'copy' to Copied Layers and Groups**" (*see the picture below*)



To open the Layer Panel: **Menu Bar > Window > Layers**