

Hello,  
Thank you for purchasing the  
**Face Painting** photoshop action

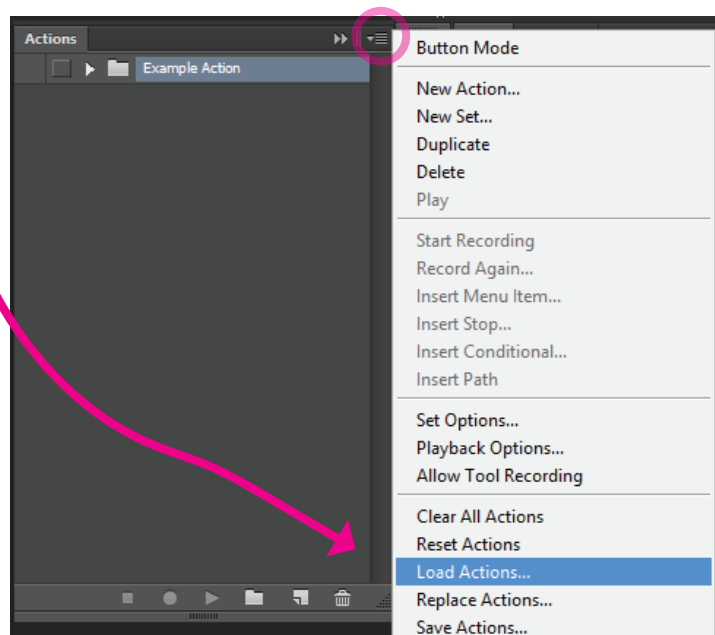


The video below will demonstrate how to use the action and how you can optimise the look of your design after the action has finished. The video covers some important techniques that you will want to use after the action has finished

<https://youtu.be/-l1wN1Z4TKE>

## HOW TO INSTALL THE ACTION

- 1) Open Photoshop and go to the Action Panel (menu Window > Actions)
- 2) Load the Action into the Action Panel: Click the dropdown icon on the top right corner of the Action Panel to open the option menu, then click on "Load Actions"
- 3) Select the action file (\*.atn) you want to install. Click Load/Open button to complete the installation.
- 4) The action will now appear in your Action Panel and ready to use.

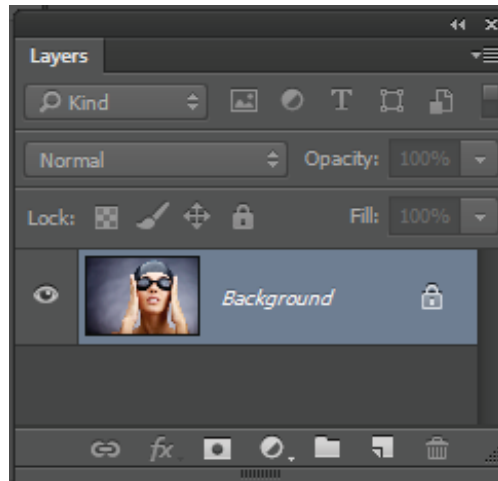


Please note: Before install the action, make sure the action package you have been downloaded is already unzipped.

## BEFORE RUN THE ACTION

1) Preparing your image: [https://youtu.be/imGy\\_SC1Kok](https://youtu.be/imGy_SC1Kok) (video clip option)

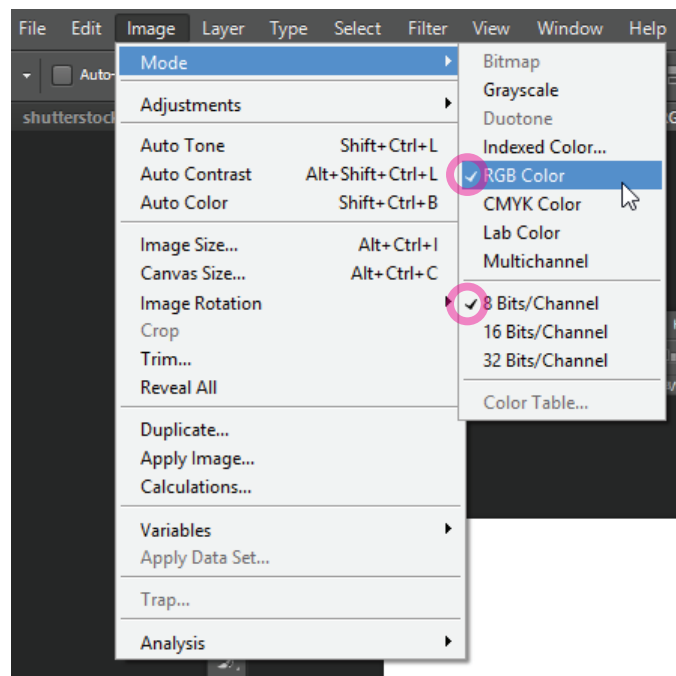
\_ Check the layer panel and make sure your photo has only a single background layer. To set your photo as a background: Go to menu bar, then select Layer > Flatten Image.



\_ Your photo must in RGB color mode. To set the color mode: Go to menu bar, then select Image > Mode > RGB Color

\_ Your photo must have 8 bits color. To set the color bit: Go to menu bar, then select Image > Mode > 8 Bits/Channel.

\_ Make sure the photo resolution is 72dpi or higher

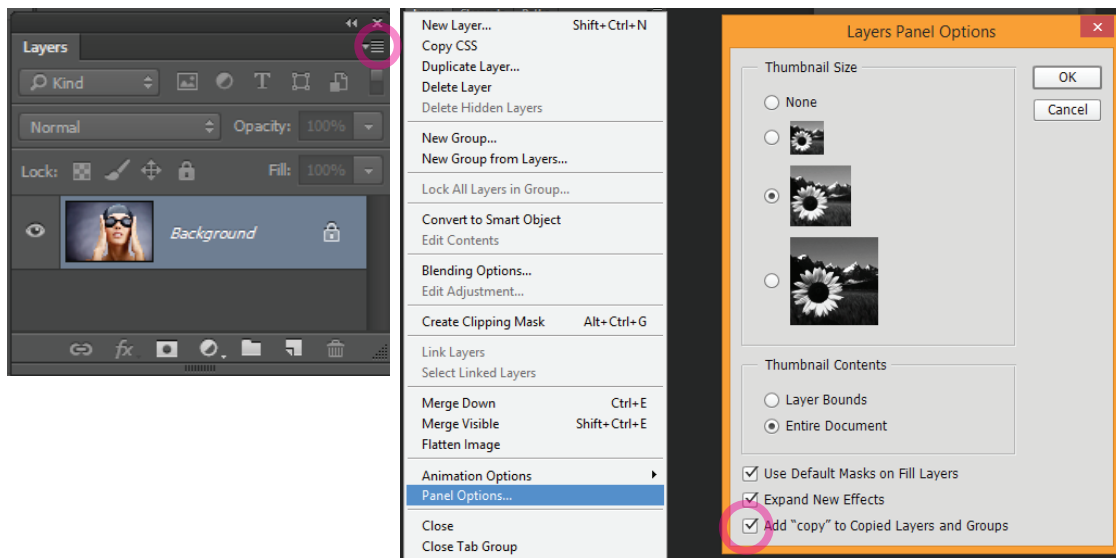


\* Note: Avoid using small resolution images. For the best results, use Photos between 1500px - 3500px high/wide.

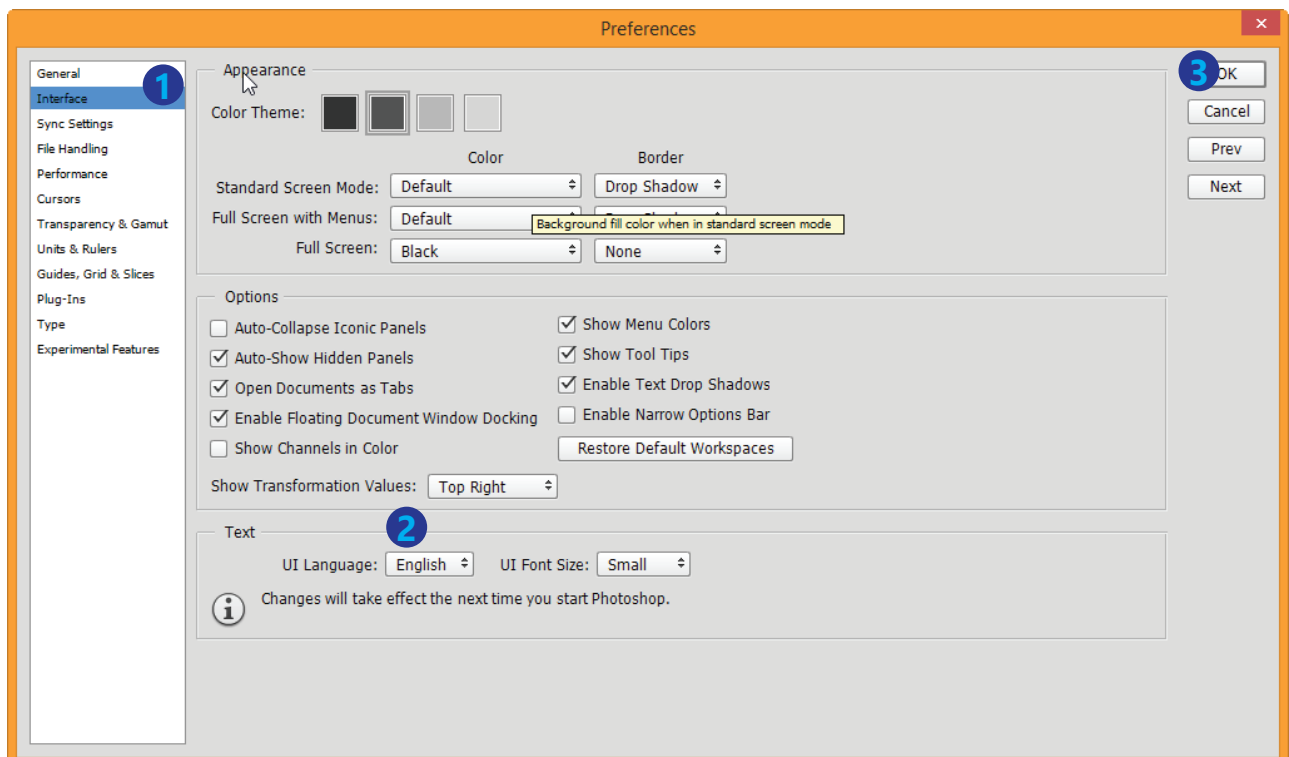
## 2) Preparing your Photoshop:

\_ Make sure the "Add 'copy' to Copied Layers and Groups" option is selected:

Go to layer panel and open the option menu (click the dropdown icon on the top right corner of the Layer Panel). • When the menu is already open, click on "Panel Option" to open the Layers Panel Options. • Next, select (checked) the "Add 'copy' to Copied Layers and Groups" (see the picture below)

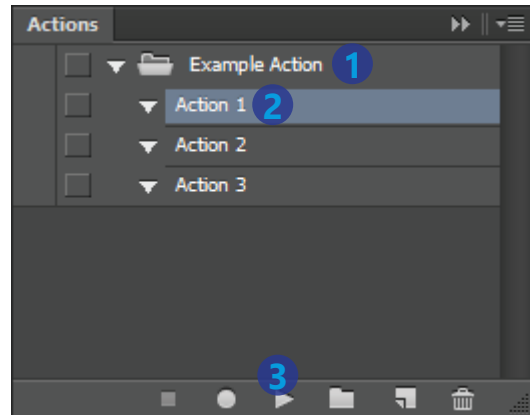


\_ If your Photoshop is in a non-English version, please follow this instruction: Menu Edit > Preferences > Interface... and select UI Language: English, then click OK



## HOW TO RUN ACTION

- \_ Open a photo you want to work with
- \_ Go to action panel. Select the action you have been installed. Now open the action set/group (1), select the action you want to run (2), then click the play button to run the action (3)



*Remember, after the action has finished, try to experiment with all the different layers. Hide or show layer, duplicate layer to enhance the effects, transform, rotate, change blend mode, ect... You can create unlimited effects, incredible detailed designs with only a few minutes of experimenting with the layers.*



## TROUBLESHOOTING AND SUPPORT

If you are experiencing errors, try to do these following steps:

**Please make sure:**

- \_ You use high resolution photo to work with. For the best result, it is recommended to use photo between 1500px - 3500px high/wide (72dpi or higher).
- \_ Your photo has a well-balanced contrast (not too dark or too bright).

**Reinstall the action and Resetting your Photoshop preferences:**

- \_ Remove the action from the action panel.
- \_ Re-download the action from your download page.
- \_ Reset your Photoshop Preferences. To do this, please restart your Photoshop. And then, hold down Alt + Ctrl + Shift (Windows) / Command + Option + Shift (Mac) while the Photoshop is starting up. When a dialog box appear to asking if you wish to delete the preferences/settings file, please delete it.
- \_ Reinstall the action you just downloaded
- \_ Purging the history. To do this, go to the menu Edit > Purge > All
- \_ Try to run the action again.

**If you are using a Non-English Photoshop and if you still having errors. Change your Photoshop language to English.**

**Suggestion and Support:**

- \_ Please try the action to several photos.
- \_ If you are still having problems, please send me an email via my profile page here:  
<http://graphicriver.net/user/pasulukha>