



INSTALL ACTION IN PHOTOSHOP

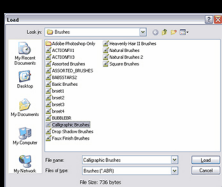
1. Double click on **Action ATN** , **Brush ABR** and **Pattern PAT** file to install in photoshop.

If you have problems loading the brush try this way :

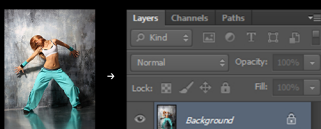
Press the triangle on the right of the word Brush and the Brush palette will open. In the Brush palette click the triangle in the right upper corner and you will see a fall-out menu where you should select the item Load Brushes.



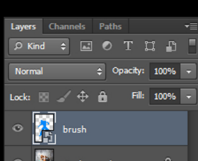
You will see the Load Brushes dialog box. Choose the brush preset you want from the list.



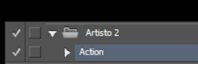
2. Place your photo in photoshop.



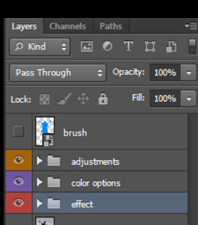
Create new layer name it **brush** and paint area. after finish with paint be sure your brush layer selected



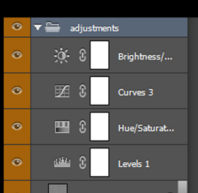
Click **Alt+FS** to open Action menu in photoshop



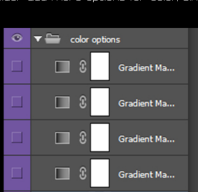
3. After action is finish your layers like this



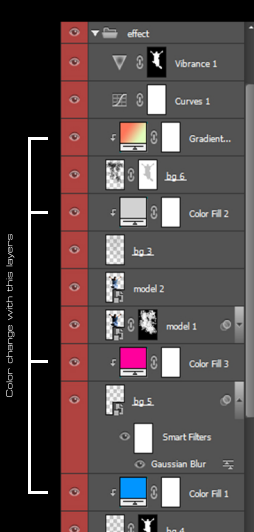
Open adjustments folder to change options for brightness, saturation, sharpnes, lightning



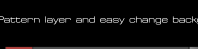
In color options folder add more options for color; simply click eye icon



In effect: folder you can play with layers for different effect; change colors, blending mode, opacity or filter effect:



Double click on Pattern layer and easy change background pattern



Be sure your photoshop set to RGB color, Bits/channel, English version